



## Mori Trust Hotels & Resorts Co., Ltd. Hotel Guide



- 1 Tokyo Marriott Hotel (Tokyo) ... 3
- 2 Fuji Marriott Hotel Lake Yamanaka (Yamanashi) ... 4
- 3 Karuizawa Marriott Hotel (Nagano) ... 5
- 4 Lake Biwa Marriott Hotel (Shiga) ... 6
- 5 Nanki-Shirahama Marriott Hotel (Wakayama) ... 7
- 6 Izu Marriott Hotel Shuzenji (Shizuoka) ... 8



- 1 Hotel Laforet Shuzenji (Shizuoka) ... 9
- 2 Laforet Hakone Gora Yunosumika (Kanagawa) ... 10
- 3 Laforet Ito Onsen Yunonitwa (Shizuoka) ... 11
- 4 Hotel Laforet Nasu (Tochigi) ... 12

### COURTYARD<sup>®</sup> BY MARRIOTT

- 1 Courtyard by Marriott Hakuba (Nagano) ... 13
- 2 Courtyard by Marriott Tokyo Station (Tokyo) ... 14
- 3 Courtyard by Marriott Shin-Osaka Station (Osaka) ... 15



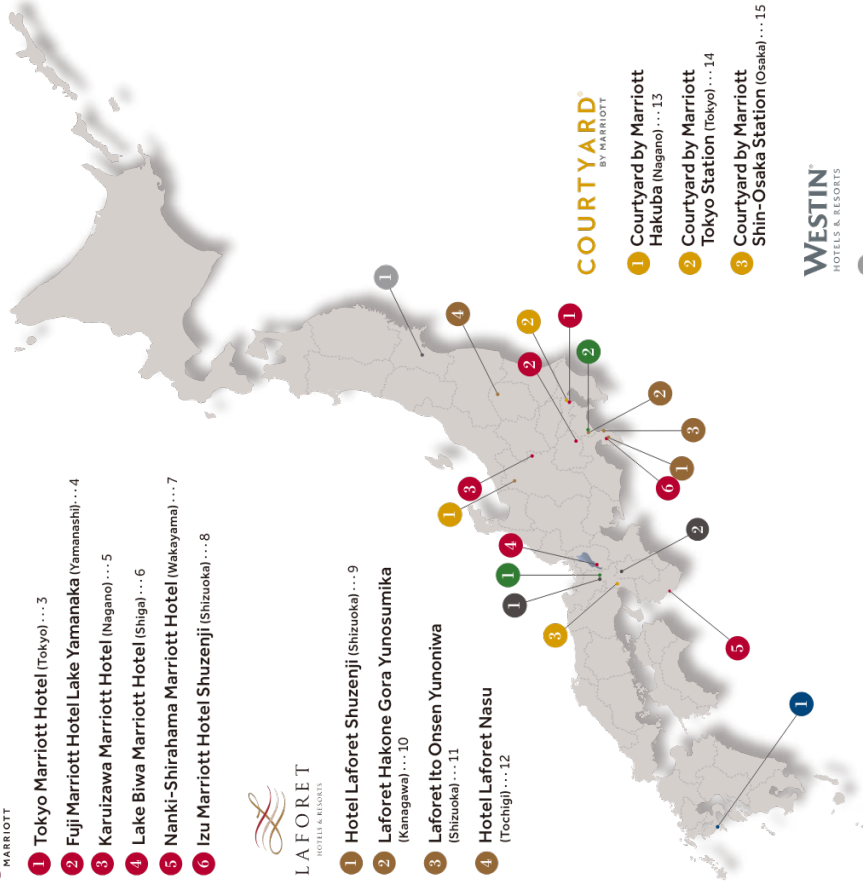
- 1 The Westin Sendai (Miyagi) ... 16

### THE LUXURY COLLECTION

- 1 Suiran, a Luxury Collection Hotel, Kyoto (Kyoto) ... 17
- 2 Shisui, a Luxury Collection Hotel, Nara (Nara) ... 18
- 3 IRAPH SUI, a Luxury Collection Hotel, Miyako Okinawa (Okinawa) ... 19
- 1 Ryokan Karaku, Gion Kyoto (Kyoto) ... 20
- 2 Gora-Kansuiro (Kanagawa) ... 21

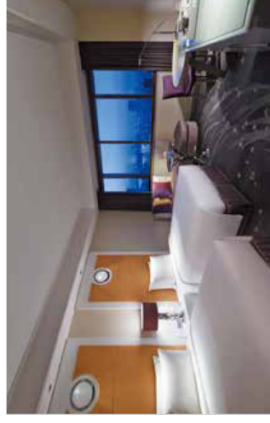


- 1 Hotel Indigo Nagasaki Glover Street (Nagasaki) ... 22



## Tokyo Marriott Hotel

Enjoy a trip full of wonder, surrounded by greenery in Gotenyama, Shinagawa. Easy access to the center of Tokyo and to the rest of the world makes this a great spot for travel whether it is on business or with the family.



Guest Rooms (Total Number: 249)	Occupancy	Room Size (m <sup>2</sup> )	Deluxe Twin Number of Rooms
Superior King	2	30	55
Deluxe Twin	2-3	38	96
Deluxe King	2	38	51
Pure Wellness Room Deluxe Twin	2	38	4
Pure Wellness Room Deluxe King	2	38	5
Garden Suite	2-3	70	3
Executive Deluxe Twin	2-3	38	16
Executive Deluxe King	2	38	11
Junior Suite	2	70	6
The Gotenyama Suite	2	82	1
Presidential Suite	2	108	1

### Conference & Banquet Rooms

	Room Size (m <sup>2</sup> )	Ceiling Height (m)	Theatre	Classroom	Capacity Standing Buffet	Banquet	Wedding
The Gotenyama Ballroom	895	7	1,000	600	1,000	500	400
Iris / Camellia	340	2.7	390	200	200	180	-
The Garden View	135	2.7	-	-	80	70	60
Oak	75	2.7	48	35	40	30	-
Maple / Cornus	80	2.7	50	40	50	40	-
Cypress / Zekkova	80	2.7	50	40	50	40	-
Studio	200	3.0	200	100	140	120	110
The Forest	75	3.0	80	40	50	-	-



### Restaurant, Lounge "Lounge & Dining G"

Opening Hours : 6:30a.m.-11p.m.  
 Number of Seats : 185 (Dining & Lounge : 137, 3 Private Rooms : 48)  
 \* "Pastry & Bakery GCo.", next door

### Facilities

Fitness Salon, Executive Lounge, Jogging Course (About 1km), Gotenyama Garden (About 6.612m<sup>2</sup>), 2Chapels

### Information

4-7-36 Kitashinagawa, Shinagawa-Ku, Tokyo 140-0001, Japan  
 TEL +81-3-5488-3911 www.marriott.com/tyomc

#### ■ By Train

- About 5 minutes by shuttle bus or about 10 minutes on foot from the Takanawa Exit of Shinagawa Station on the JR Shinkansen, the JR Lines and the Keikyu Line.
- About 20 minutes on foot from Gotanda Station on the JR Yamanote Line, the Tokyu Ikegami Line and the Toei Asakusa Line.

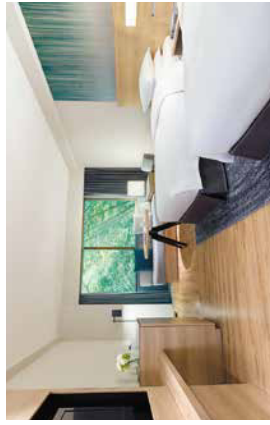
#### ■ By Plane

- Only 13 minutes from Haneda Airport (International Terminal) to Shinagawa Station.
- About 65 minutes by Narita Express to Shinagawa Station from Narita Airport.
- About 80 minutes by Airport Limousine bus to the Hotel from Narita Airport.

\*Opening hours may vary. \*The information is correct as of February 2022 and may be subject to change.

## Fuji Marriott Hotel Lake Yamanaka

The hotel has a spacious dining hall, open-air bath with seasonal views and tennis courts. You can refresh your mind and body in the fresh air at the base of Mt. Fuji.



Superior Room (Twin)

Guest Rooms (Total Number: 105)	Occupancy	Room Size (m <sup>2</sup> )	Number of Rooms
Superior Room (Twin)	2-4	41	44
Superior Room (King)	2-3	41	21
Japanese-Western Room (Twin)	2-4	41	5
Japanese-Western Room (King)	2-4	41	2
Premium Room with Hot-Spring Bath (Twin)	2-3	41	15
Premium Room with Hot-Spring Bath (King)	2-3	41	6
Executive Suite	4	67-68	2
Dog-Friendly Japanese Room	2-4	41	10

Grill & Dining G



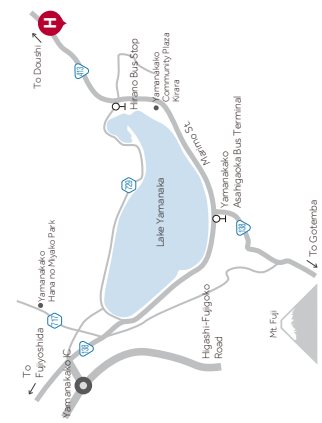
Conference & Banquet Rooms	Room Size (m <sup>2</sup> )	Ceiling Height (m)	Theatre	Classroom	Standing	Hollow-Square	Banquet
Salon1	139	2.7	130	60	54	54	-
Salon2	38	2.7	49	24	24	24	-
Convention Hall*	300	2.8	210	144	85	-	-
Ginga*	210	2.8	-	-	-	130	104

\*Located in an Annex. Seating available.

### Information

1256-1 Hirano, Yamanakako-Mura, Minamitsuru-gun, Yamanashi 401-0502, Japan  
TEL: +81-555-65-6400 www.marriott.com/mmfj

- **By Car**
  - About 10km from Higashi-Fujigoko Road's Yamanakako IC.
- **By Train**
  - About 25 minutes by bus from Fujisan Station on the Fuji Express Line via Otaki Station on the JR Chuo Main Line, get off at Yamanakako Ashiagako Bus Terminal.\*
- **By Bus**
  - About 135 minutes by Fujiyuko Express Bus from Shinjuku Expressway Bus Terminal to Yamanakako Ashiagako Bus Terminal.
  - \*About 15 minutes by reservation only.



## Karuzawa Marriott Hotel

This hotel is tucked away in Karuzawa, a highland resort with a stylish towscape amid natural surroundings. Enjoy your relaxing holiday by in natural hot spring, variety of accommodation category and tasting specialty dishes using indigenous Shinshu ingredients.



Main Wing / Superior Room (King)

Guest Rooms (Total Number: 142)	Occupancy	Room Size (m <sup>2</sup> )	Number of Rooms
Superior Room (Twin)	2	32	54
Superior Room (King)	2	32	8
Japanese Room	2-3	33	10
Junior Suite	2-5	71	2
Executive Suite	2-5	78	2

Grill & Dining G



**Restaurant, Lounge "Grill & Dining G"**  
Opening Hours : 7a.m.-11a.m., 5:30p.m.-9p.m.  
Number of Seats : 156 (Dining: 96, Lounge: 48, 1 Private Room: 12)

**Hot-Spring Bath (Indoor Bath, Open-Air Bath)**  
Opening Hours : 5a.m.-10a.m., 3p.m.-12a.m.  
Spring Quality : Sodium Bicarbonate  
Efficacy : Neuralgia, Muscle Soreness, Joint Pain, Frozen Shoulder, Locomotive Paralysis, Bruise, Digestive Disorders, etc.

**Spa "AN SPA KARUZAWA"**  
Opening Hours : 4p.m.-11p.m. (Weekends, Holidays: from 3p.m.)

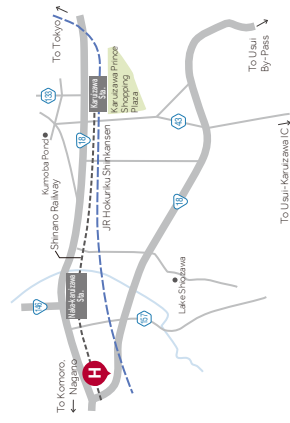
**Fitness Center**  
Opening Hours : 24 Hours, Daily  
Major Equipment : Treadmill, Elliptical Machine, Upright Bike, etc.

**Facilities**  
Work Lounge (Cozy Works KARUZAWA)

### Information

4337 Nagakura, Karuzawa-Machi, Nagano 389-0111, Japan  
TEL: +81-267-46-6611 www.marriott.com/mmkj

- **By Car**
  - About 13km from Joshin-Etsu Expressway's Usui-Karuzawa IC.
- **By Train**
  - About 15 minutes by taxi from Karuzawa Station on the JR Hokuriku Shinkansen.
  - About 5 minutes by taxi from Naka-Karuzawa Station on the Shinano Railway.



Conference & Banquet Rooms	Room Size (m <sup>2</sup> )	Calling Height (m)	Theatre	Classroom	Standing	Hollow-Square	Banquet
Room1	104	2.7	60	48	42	60	40
Room2	26	2.3	-	-	-	-	12

\*Opening hours may vary. \*The information is correct as of February 2025 and may be subject to change.

\*Opening hours may vary. \*The information is correct as of February 2025 and may be subject to change.



MARRIOTT  
LAKE BIWA

## Lake Biwa Marriott Hotel

This hotel is located side of Lake Biwa, Japan's largest lake, and boasts beautiful views from its guest rooms and dining areas. With easy access from Kyoto, it is perfect for both business and pleasure.



Deluxe Room (Twin)

Guest Rooms (Total Number: 274)		Room Size (m <sup>2</sup> )	Number of Rooms
Superior Room (Twin)	2-3	30	96
Superior Room (King)	2-3	30	32
Japanese Room	2-4	40	48
Deluxe Room (Twin)	2-3	40	36
Deluxe Room (King)	2-3	40	12
Premium Room with Hot-Spring Bath (Twin)	2-3	40	26
Premium Room with Hot-Spring Bath (King)	2-3	40	7
Lake-View Premium Room with Hot-Spring Bath (Twin)	2	40	4
Lake-View Premium Room with Hot-Spring Bath (King)	2	40	4
Junior Suite	2	58-60	2
Executive Suite	2	80	1
Dog-Friendly Room	2	30	6

### Restaurant "Grill & Dining G"

Opening Hours : 7a.m.-11a.m., 11:30a.m.-3p.m., 5:30p.m.-10p.m.  
Number of Seats : 190 (Dining : 182, 1 Private Room : 8)

### Lounge

Opening Hours : 11a.m.-10p.m.  
Number of Seats : 57

### Hot-Spring Bath (Indoor Bath, Sauna)

Opening Hours : 5a.m.-1:30p.m., 3p.m.-12a.m.  
Spring Quality : Sodium Bicarbonate and Chloride Springs  
Efficacy : Fatigue, Wound, Dermatitis, Neuralgia, etc.

### Fitness Center

Opening Hours : 24 Hours, Daily  
Major Equipment : Treadmill, Elliptical Machine, Upright Bike, etc.

### Facilities

Work Lounge (Cozy Works LAKE BIWA),  
Tennis Courts (Outdoor/7 Omni Courts Equipped with Lighting for Night Games), Gymnasium (1,080m<sup>2</sup>), Pool (Indoor/25m x 10m), Futsal Courts (Outdoor/2 Courts Equipped with Lighting for Night Games), Driving Range, Bicycle Rental "Giant Store", planetarium, 2 Chapels, 2 Reception Halls, Shop



The Garden Ballroom

Conference Rooms		Room Size (m <sup>2</sup> )	Capacity
Main Room*	378	2.8	374
Medium Room*	230	2.7	180
*There are 11 rooms other than the above. **Subdivisible			
Banquet Rooms		Room Size (m <sup>2</sup> )	Capacity
The Garden Ballroom*	577	6.9	500
Sakura*	206	3.2	120
Heavenly Room	179	4.3	80
*Subdivisible			

### Information

2876 Jukkenya, Imahame-cho, Moriyama-shi, Shiga 524-0101 Japan  
TEL +81-77-585-6100 www.marriott.com/osab

#### By Car

- About 15km from Meishin Expressway's Kyoto-East I.C.
- About 18km from Meishin Expressway's Ritto I.C.
- By Train
- About 15 minutes by shuttle bus from Katata Station on the JR Kosei Line.
- About 40 minutes by local bus from Moriyama Station on the JR Biwako Line.

\*Free shuttle bus service is available from Katata Station and Moriyama Station to the hotel.  
(Reservations required at times)



\*Opening hours may vary. \*The information is correct as of February 2025 and may be subject to change.

## Nanki-Shirahama Marriott Hotel

With a view of the Pacific Ocean across Shirahama, this hotel transports you, enrapturing you away from the daily grind, to a relaxing atmosphere, where you can enjoy grilled food and fresh seafood and Shirahama Onsen, one of the three most ancient hot springs in Japan.



Ocean-View Premium Room with Hot-Spring Bath (King)

Guest Rooms (Total Number: 182)		Room Size (m <sup>2</sup> )	Number of Rooms
Superior Room (Twin)	2-3	42	16
Superior Room (King)	2-3	42	8
Japanese Room	2-4	42	16
Garden-View Japanese-Western Room (Twin)	2-5	42	24
Garden-View Japanese-Western Room (King)	2-5	42	12
Ocean-View Japanese-Western Room (Twin)	2-5	42	36
Ocean-View Japanese-Western Room (King)	2-5	42	12
Deluxe Room (Twin)	2	42	7
Deluxe Room (King)	2	42	3
Ocean-View Premium Room with Hot-Spring Bath (Twin)	2-3	42	35
Ocean-View Premium Room with Hot-Spring Bath (King)	2-3	42	11
Junior Suite	2	84	1
Executive Suite	2	84	1

### Restaurant "Grill & Dining G"

Opening Hours : 7:30p.m.-11a.m., 5:30p.m.-10p.m.  
Number of Seats : 280 (Dining : 120, Private Room "Grace" : 48, Private Room "Gentle" : 112)

### Lounge

Opening Hours : 11a.m.-11p.m.  
Number of Seats : 50

### Hot-Spring Bath (Indoor Bath, Open-Air Bath, Private Bath)

Opening Hours : 5a.m.-10a.m., 12p.m.-12a.m. (Private Bath is from 2p.m.)  
Spring Quality : Sodium Chloride and Bicarbonate Springs with Sulfur  
Efficacy : Burn, Wound, Dermatitis, Neuralgia, etc.

### Fitness Center

Opening Hours : 24 Hours, Daily  
Major Equipment : Treadmill, Elliptical Machine, Upright Bike, etc.

### Facilities

Lounge (Cozy Works NANKI-SHIRAHAMA), Pool, Spa "Jolve SPA", Bicycle Rental, Chapel, Shop



The Ocean View

Conference Rooms		Room Size (m <sup>2</sup> )	Capacity
The Ocean View*	144	2.7	135
Laurel*	150	2.5	130
*Subdivisible			
Banquet Rooms		Room Size (m <sup>2</sup> )	Capacity
Shirahama	338	3.8	200
Pearl	130	3.8	80
Shell	104	3.8	50
Coral	104	3.8	50

### Information

2428 Shirahama-cho, Nishimuro-gun, Wakayama 649-2211 Japan  
TEL +81-739-43-2600 www.marriott.com/osana

#### By Car

- About 14km from Hanwa Expressway's Nanki Tanabe I.C.
- By Train
- About 15 minutes by taxi from Shirahama Station on the JR Kisei Main Line.
- By Plane
- About 75 minutes from Haneda Airport, 7 minutes by taxi from Nanki-Shirahama Airport.



\*Opening hours may vary. \*The information is correct as of February 2025 and may be subject to change.

## Izu Marriott Hotel Shuzenji

The hotel enjoys an outstanding location, with a panoramic view of the sacred Mt. Fuji and the Amagi mountain range. You can enjoy the 1,200-year-old hot spring and the delectable mountains and ocean.



Premium Room with Open-Air Bath (Twin)

Guest Rooms (Total Number: 128)	Occupancy	Room Size (m <sup>2</sup> )	Number of Rooms
Superior Room (Twin)	2-3	30-31	12
Superior Room (King)	2-3	30-31	4
Superior Room with Hot-Spring Bath (Twin)	2	31	5
Superior Room with Hot-Spring Bath (King)	2	31	5
Japanese Room (Twin)	2-4	41	14
Japanese Room (King)	2-4	41	6
Japanese-Western Room (Twin)	2-4	41	7
Japanese-Western Room (King)	2-4	41	3
Deluxe Room with Open-Air Bath (Twin)	2-3	41	26
Deluxe Room with Open-Air Bath (King)	2-3	41	10
Premium Room with Open-Air Bath (Twin)	2-4	49	10
Premium Room with Open-Air Bath (King)	2-4	49	3
Junior Suite	2-5	83	1
Executive Suite	2-5	99	1
Dog-Friendly Superior Room	2	31	10
Dog-Friendly Japanese Western Room	2-4	41	10
Dog-Friendly Garden Suite	2-4	52*	1

\*Does not include deck area, etc.



**Laforet Resort Shuzenji**  
Spread over an area of approximately 1,650,000m<sup>2</sup>, this resort complex features two hotels, hot springs, and a variety of sports facilities.

### Facilities

**Hot-Spring Bath "Mori no Yu" (Indoor Bath, Open-Air Bath, Sauna)**  
Opening Hours: 12 Onni Courts Equipped with Lighting for Night Games), Gymnasium, Golf Course, Dog Run, Chapel, Shop, etc.  
Spring Quality : Simple Alkaline Springs  
Efficacy : Fatigue, Neuralgia, Joint Pain, Frozen Shoulder, Motor Paralysis, etc.

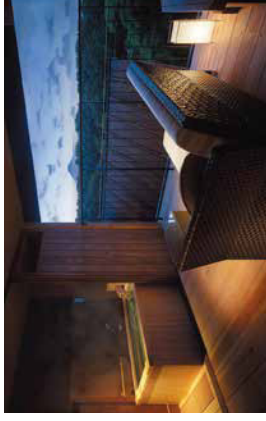
### Conference & Banquet Rooms

Room Size (m <sup>2</sup> )	Ceiling Height (m)	Capacity	
		Standing	Banquet
Conference*	400	3.7	300
Banquet*	400	4.5	-

\*There are 4 rooms other than the above. \*Subdividable.

## Hotel Laforet Shuzenji

We have guest rooms to meet a variety of tastes, from rooms with an open-air bath to cottages that can be used by families and friends. Set in the natural expanse of Izu, you will enjoy a holiday that is just to your liking.



Sanshuisuimei

Guest Rooms (Total Number : 220)	Occupancy	Room Size* (m <sup>2</sup> )	Number of Rooms
Western Room (Twin)	3-4	44-57	4
Japanese-Western Room (Twin)	4-5	45-59	36
Western Room (Dog Friendly Room / Twin)	3-4	44-62	8

\*Deck area included in some guest rooms

Guest House	Occupancy	Room Size (m <sup>2</sup> )	Number of Rooms
Standard Room (Twin)	2-3	36	36
Premium Room (Twin)	2	59	4

Center House	Occupancy	Room Size (m <sup>2</sup> )	Number of Rooms
2 Japanese rooms + Living Room	4-6	69	49

Cottage	Occupancy	Room Size (m <sup>2</sup> )	Number of Rooms
Cottage H-1 (J Building)	2-5	25-53	24
Cottage (Six Additional Cottages)	7-12	89-142	43
Dog Cottage	4-5	53	16

### Sanshuisuimei

Training Room	Room Size (m <sup>2</sup> )	Ceiling Height (m)	Theatre	Classroom	Hollow-Shape	Capacity
No.11	89	2.8	100	32	24	20
No.12	109	2.8	120	48	28	24
No.13	131	2.8	140	54	32	24
No.14	87	2.8	80	24	20	16

### Banquet Rooms

Room Size (m <sup>2</sup> )	Ceiling Height (m)	Standing	Banquet
Whole	400	4.5	230-350
4/5	320	4.5	160-230
3/5	240	4.5	100-160
2/5	160	4.5	40-100
1/5	80	4.5	30-40

### Restaurant "Dining FUJI"

Opening Hours : 7am-9:15a.m., 11a.m.-1:30p.m., 5:30p.m.-9p.m.  
Number of Seats : 122

### Information

1529 Odaira, Izu-Shi, Shizuoka 410-2415 Japan  
Izu Marriott Hotel Shuzenji TEL +81-558-72-1311 www.marriott.com/fszj  
Hotel Laforet Shuzenji TEL +81-558-72-3311 www.laforet.co.jp/en/sz  
■ By Car  
■ By Train  
\*Change to the Izu Hakone Railway from the JR Tokaido Shinkansen at Mishima Station, and get off at Shuzenji Station. From there, it is about 25 minutes by shuttle bus.  
\*Take the JR Limited Express "Odoriko" to travel directly from Tokyo Station to the way to Shuzenji Station.



## Laforet Hakone Gora Yunosumika

The hot springs inn is situated in the particularly quiet Gora area of Hakone, which offers convenient access to and from Tokyo. Feel the gentle flow of water here as you relax both body and mind.

### <Main Building>

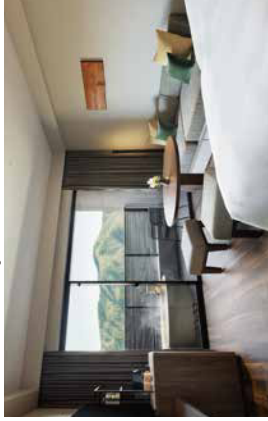


Premium Room with Open-Air Bath (Japanese-Western Room / Twin)

Guest Rooms (Total Number: 44)	Occupancy	Room Size (m <sup>2</sup> )	Number of Rooms
Standard Room (Japanese Room)	4	60	1
Standard Room (Japanese-Western Room / Twin)	2-6	35-67	19
Premium Room with Open-Air Bath (Western Room / Twin)	2-3	36	2
Premium Room with Open-Air Bath (Japanese-Western Room / Twin)	3-6	39-86	18
Premium Room with Open-Air Bath (Dog-Friendly Room / Western Room / Twin)	3-4	51-60*	4

\*Deck area, etc. included

### <Ayano-kan, Annex>



Premium Room with Open-Air Bath with Terrace

Guest Rooms (Total Number: 22)	Occupancy	Room Size (m <sup>2</sup> )	Number of Rooms
Premium Room with Open-Air Bath (Western Room with Terrace / Twin)	2-4	40*	18
Premium Dog-Friendly Room with Open-Air Bath (Western Room with Terrace / Twin)	2-3	40*	4

\*Terrace area, etc. included

### Information

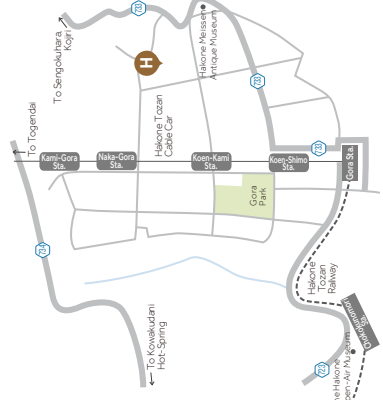
1520 Gora, Hakone-Machi, Ashigarashimo-Gun, Kanagawa 250-0408 Japan  
TEL: +81-460-86-2121 [www.laforet.co.jp/gora/](http://www.laforet.co.jp/gora/) #St.Lang-en

#### ■ By Car

- About 11km via Seisho Bypass on Odawara Atsugi Road and from Odawara Hakone Road's Yamazaki IC.
- About 18km from Tomei Expressway's Gotemba IC.

#### ■ By Train

- Transfer to the Hakone Tozan Railway at Odawara Station on the JR Tokaido Shinkansen or at Hakone Yumoto Station on the Odakyu Line, and get off at Gora Station. From there, change to the cable car and get off at Nakagora Station (on the right), from which it is a 5-minute walk.



## Laforet Ito Onsen Yunoniwa

The tastefully modern Japanese feel, fresh seafood, and various styles of hot springs allow guests to peacefully enjoy the pleasing hot waters.



Premium Room with Hot-Spring Bath (Japanese-Western Room / Twin)

### Guest Rooms (Total Number: 84)

Room Type	Occupancy	Room Size (m <sup>2</sup> )	Number of Rooms
Standard Room (Japanese Room with Bed / Twin)	2-3	32	5
Standard Room (Japanese Room)	2-3	32	25
Premium Room with Hot-Spring Bath (Japanese-Western Room / Twin)	3-5	45	54



Hot-Spring Bath "Kenshinyu" (Open-Air Bath)

### Conference Rooms (Training Purposes)

Room Name	Room Size (m <sup>2</sup> )	Ceiling Height (m)	Theatre	Classroom	Hollow-Square
Hana・Tori	132	2.6	60	30	28
Kaze・Tsuki	180	2.4	100	64	36
Umi	42	2.5	30	16	16

### Banquet Rooms (Japanese-Style Banquet Purposes)

Room Name	Room Size (m <sup>2</sup> )	Ceiling Height (m)	Capacity Banquet
Hana・Tori	132	2.6	48
Kaze・Tsuki	180	2.4	80
Umi	42	2.5	16

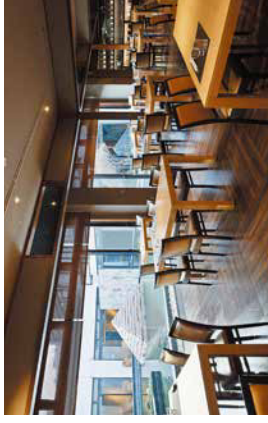
### Facilities

Foot Bath, Shop

### Restaurant "Shikisai"

Opening Hours : 7:30a.m.-9a.m., 5:30p.m.-9p.m.  
Number of Seats : 134

Restaurant "Shikisai"



### Hot-Spring Bath "Kenshinyu" (Indoor Bath, Open-Air Bath, Family Bath)

Opening Hours : 6a.m.-10a.m., 12p.m.-12a.m. (Family Bath: 24 Hours, Daily)  
Spring Quality : Low Alkaline Springs  
Efficacy : Fatigue, Neuralgia, Muscle Soreness, Joint Pain, Frozen Shoulder, Bruises, etc.

### Information

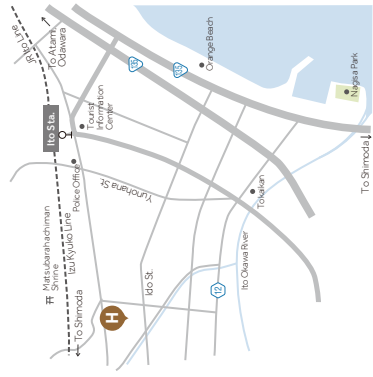
2-3-1 Shikaido, Ito-Shi, Shizuoka 414-0004 Japan  
TEL: +81-537-37-3133 <https://www.laforet.co.jp/ito/> #St.Lang-en

#### ■ By Car

- About 44km via National Road 135 from Odawara Atsugi Road's Odawara-Nishi IC.

#### ■ By Train

- Transfer to Ito Station on the Ito Line from Atami Station on the JR Tokaido Shinkansen, after which it is an 8-minute walk.
- \*Take the JR "Odoriko" special express to travel directly from Tokyo Station all the way to Ito Station.



## Hotel Laforet Nasu

Visitors to the Nasu Highlands can find enjoyment in each season, and this very popular resort boasts all sorts of recreational facilities. Come and enrich your soul in this beautiful location surrounded by nature.



Standard Room (Western Room) / Twin

Guest Rooms (Total Number: 118)		Room Size (m <sup>2</sup> )	Number of Rooms
<b>Hotel Building</b>			
Economy Room (Twin)	2	31	17
Standard Room (Western Room) / Twin	2-3	31	36
Standard Room (Japanese Room)	4	43	22
Standard Room (Japanese-Western Room) / Twin	4	43	16
Deluxe Room (Twin)	2	31	2
Premium Room	2	80	1
<b>Cottage</b>			
Forest Cottage (Loft Bed Type)	2-6	76	4
Forest Cottage (Standard Type)	2-5	76	4
Dog Comfort Cottage	2-5	76	8
Dog-Friendly Cottage	2-5	76	8



Conference Rooms (No.3-7)

Conference Rooms		Room Size (m <sup>2</sup> )	Ceiling Height (m)	Hollow-Square	Capacity
No.1, 2, 3, 5, 6, 7	392	3.0	33.6	240	-
No.8, 9	152	3.0	9.6	36	32
Breakout Room (17 Rooms)	28	-	-	-	8
*There are 11 rooms either than the above.					
<b>Banquet Room</b>		Room Size (m <sup>2</sup> )	Ceiling Height (m)	Standing Buffet	Capacity
Whole*	336	2.6	180	150	100

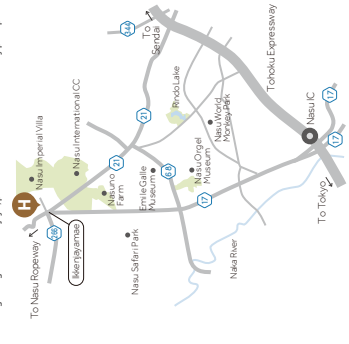
\*Subdividable.

### Information

206-859 Yumoto, Nasu-Machi, Nasu-Gun, Tochigi 325-0301 Japan

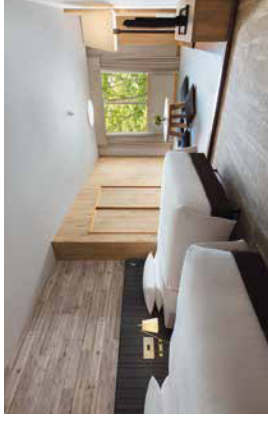
TEL +81-287-76-1811 www.laforet.co.jp/en/nasu

- By Car
  - About 10km via Nasu Kaido (Prefectural Road 17) from Tohoku Expressway's Nasu IC.
- By Train
  - About 30 minutes by shuttle bus (by reservation only) from Nasu-Shiobara Station on the JR Tohoku Shinkansen.
- By Bus
  - About 3 hours 30 minutes by JR Express Bus "Nasu-Shiobara" from Oji Station or Shinjuku Expressway Bus Terminal to Ikkenjaye.
  - After getting off at Ikkenjaye, please call the hotel for a courtesy pickup.



## Courtyard by Marriott Hakuba

Hakuba, one of Japan's foremost mountain resorts, facilitates a range of activities that you can enjoy in any season. Our comfortable hotel and international hospitality allow all to experience the charm of Hakuba.



Japanese-Western Superior Room (Twin)

Guests Rooms (Total Number: 72)		Room Size (m <sup>2</sup> )	Occupancy	Room Size (m <sup>2</sup> )	Number of Rooms
Superior Room (Twin)	2	32	2	32	2
Japanese-Western Superior Room (Twin)	3-4	32	2	42	1
Deluxe Room (Twin)	2	42	1	43	14
Japanese-Western Deluxe Room (Twin)	4-5	43	2-4	34-35	18
Premium Room with Hot-Spring Bath (Twin)	2-4	34	2-4	34	3
Premium Room with Hot-Spring Bath (King)	2-4	34	2-4	34-35	6
Premium Room with Hot-Spring Bath (Dog-Friendly Room/Twin)	2-4	34	2-4	34	1

### Restaurant, Lounge "Dining & Bar LAVAROCK"

Opening Hours : 7a.m.-10p.m.  
Number of Seats : 161  
(Dining : 103, 1 Private Room : 6, Counter : 4, Lounge : 48)

### Hot-Spring Bath (Indoor Bath, Open-Air Bath)

Opening Hours : 6a.m.-10a.m., 3p.m.-12a.m.  
Spring Quality : Sodium Chloride Springs  
Efficacy : Neuralgia, Muscle Soreness, Bruises, Fatigue, Suffering Sensitivity to Cold, etc.

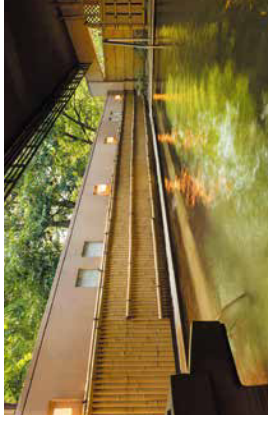
### Fitness Center

Opening Hours : 24 Hours, Daily  
Major Equipment : Treadmill, Elliptical Machine, Upright Bike, etc.

### Facilities

Work Lounge (Cozy Works HAKUBA), Ski Locker

## COURTYARD<sup>®</sup> BY MARRIOTT<sup>®</sup> Hakuba



Hot-Spring Bath (Open-Air Bath)

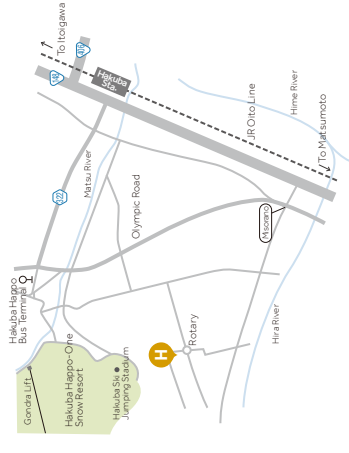
Conference & Banquet Rooms		Room Size (m <sup>2</sup> )	Ceiling Height (m)	Class room	Hollow-Square	Capacity
Studio A	133	2.3	72	60	48	48
2/3	91	2.3	42	42	30	50
1/3	46	2.3	24	24	20	16
Studio B	92	2.3	42	42	30	50
1/2	46	2.3	24	24	20	16

### Information

2937 Hokujō, Hakuba-Mura, Nagano 399-9301 Japan

TEL +81-261-72-3511 www.marriott.com/mnjch

- By Car
  - About 50km from Joetsu Expressway's Nagano IC.
  - About 55km from Nagano Expressway's Azumino IC.
- By Train
  - About 10 minutes by taxi from Hakuba Station on the JR Oito Line.
  - About 75 minutes by Express Bus from JR Nagano Station to Hakuba Happo Bus Terminal, and 5 minutes by taxi to the hotel.
- By Bus
  - About 5 hours 15 minutes by Chuo Express Bus from Shinjuku Expressway Bus Terminal to Hakuba Happo Bus Terminal, and 5 minutes by taxi to the hotel.



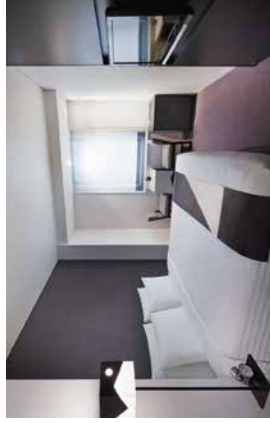
\*Opening hours may vary. \*The information is correct as of February 2025 and may be subject to change.

\*Opening hours may vary. \*The information is correct as of February 2025 and may be subject to change.

## Courtyard by Marriott Tokyo Station

Within walking distance to the Marunouchi, Ginza, and Nishi-Shinjuku areas, we have one of the best locations in the heart of Tokyo.

Our restaurant, café, fitness gym, and conference rooms meet all the diverse your needs.



Editor's King

Guest Rooms (Total Number: 150)	Occupancy	Room Size (m <sup>2</sup> )	Number of Rooms
Creator's Cozy Double	2	16	6
Creator's Double	2	19-20	29
Creator's Queen	2	19-20	50
Creator's Twin	2	26	2
Creator's King	2	26	1
Editor's Queen	2	26	6
Editor's King	2	23-24	10
Editor's Corner King	2	27	6
Editor's Twin	2	23-26	29
Photographer's Corner Twin	2	33	6
Curator's Double	2	19	5

### Restaurant "Dining & Bar LAVAROCK"

Opening Hours : 7a.m.-10a.m., 11:30a.m.-2:30p.m., 5:30p.m.-11p.m. (Sundays, Holidays: to 9p.m.)  
Number of Seats : 94 (Dining : 60, Bar Counter : 10, Curtain Room : 8, Terrace : 16)

### Café "Café & Bakery GGCo."

Opening Hours : 8a.m.-6p.m.  
(Saturdays: 10a.m.-5p.m., Sundays, Holidays: Closed)  
Number of Seats : 68 (Dining : 44, Terrace : 24)

### Fitness Room

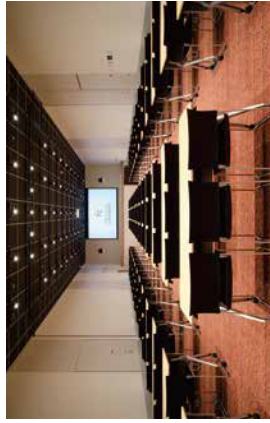
Opening Hours : 24Hours, Daily  
Major Equipment : Treadmill, Elliptical Machine, Upright Bike, etc.

### Facilities

Library Bar

## COURTYARD<sup>®</sup> BY MARRIOTT

Tokyo Station

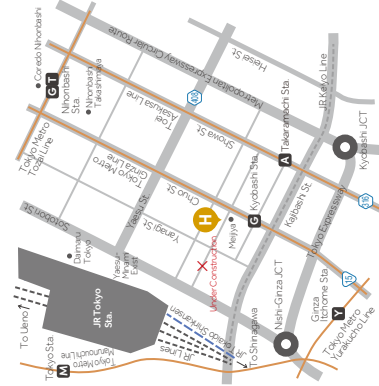


STUDIO2-3

Conference Rooms	Room Size (m <sup>2</sup> )	Ceiling Height (m)	Theatre	Classroom	Hollow-Square	Capacity
STUDIO1	52	3.9	36	27	24	
STUDIO2-3	152	3.9	130	108	60	
ROOMA	9	3.9	4	4	4	

### Information

- 2-1-3 Kyobashi, Chuo-Ku, Tokyo 104-0031 Japan  
TEL +81-3-3516-9600 [www.marriott.com/tyoqz](http://www.marriott.com/tyoqz)
- By Train
  - About 25 minutes by the Toei Asakusa Line from Haneda Airport
  - About 1 minute on foot from Kyobashi Station on the Tokyo Metro Line.
  - About 5 minutes on foot from Nishi-Shinjuku Station on the Tokyo Metro Line.
  - About 4 minutes on foot from Takaramachi Station on the Toei Subway.
- By Plane
  - About 25 minutes by the Toei Asakusa Line from Haneda Airport (International Terminal) to Takaramachi Station.
  - About 70 minutes by the Narita Express from Narita Airport to Tokyo Station.



## Courtyard by Marriott Shin-Osaka Station

With easy access, only 1 minute on foot from Shin-Osaka Station, we provide smart, world-class comfort for the active businesspeople that stay here for both work and pleasure.



Courtyard Room King

Guest Rooms (Total Number: 332)	Occupancy	Room Size (m <sup>2</sup> )	Number of Rooms
Courtyard Room Twin (4-9F)	2	30	50
Courtyard Room King (4-9F)	2	30	94
Courtyard Room High Floor Twin (10-16F)	2	30	47
Courtyard Room High Floor King (10-16F)	2	30	97
Deluxe Room Executive Floor Twin	2	30	13
Deluxe Room Executive Floor King	2	30	28
Junior Suite	2	60	2
Courtyard Suite	2	90	1

### Restaurant, Bar "Dining & Bar LAVAROCK"

Opening Hours : 6a.m.-11a.m., 11:30a.m.-3p.m., 5p.m.-10p.m.  
Number of Seats : 130

### "Teppanyaki IKKA-ICHIYO"

Opening Hours : 11a.m.-3p.m. (By Reservation Only), 5p.m.-10p.m.  
Number of Seats : 20 (Counter Seats)

### "Bar 19"

Opening Hours : 5p.m.-11p.m. (Weekends, Holidays: from 2p.m.)  
Number of Seats : 48

### Fitness Center

Opening Hours : 24 Hours, Daily  
Major Equipment : Treadmill, Elliptical Machine, Upright Bike, etc.



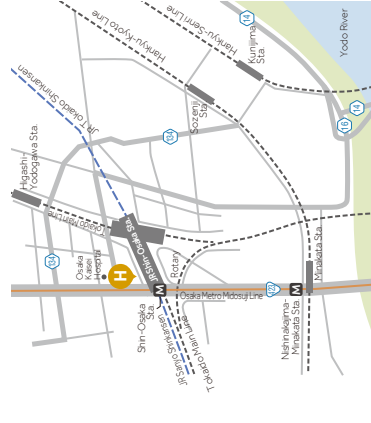
Dining & Bar LAVAROCK

### Conference & Banquet Rooms

Room	Room Size (m <sup>2</sup> )	Ceiling Height (m)	Class	Hollow-Square	U-Shape	Standing Banquet	Capacity
Room A-B	131	2.3	54	-	-	75	48
Room A	75	2.3	30	28	22	40	24
Room B	56	2.3	30	28	22	35	24
Room C	68	2.3	20	22	17	30	16

### Information

- 1-2-70 Miyahara, Yodogawa-Ku, Osaka-Shi, Osaka 532-0003 Japan  
TEL +81-6-6350-5701 [www.marriott.com/osacy](http://www.marriott.com/osacy)
- By Train
  - About 1 minute on foot from JR Shin-Osaka Station.
  - About 1 minute on foot from Shin-Osaka Station on the Osaka Metro Midosuji Line.
- By Plane
  - About 25 minutes by Airport Limousine Bus from Osaka Airport (Itami Airport) to Shin-Osaka Station.
  - About 50 minutes by the JR Limited Express "Haruka" from Kansai International Airport to Shin-Osaka Station.



\*Opening hours may vary. \*The information is correct as of February 2025 and may be subject to change.

\*Opening hours may vary. \*The information is correct as of February 2025 and may be subject to change.

## The Westin Sendai

While being close to Sendai Station, the gateway to all parts of the Tohoku region, the hotel is surrounded by nature, and is replete with elements of the culture of the Date Clan that brought luxurious comfort to you.



Superior (Twin)

Guest Rooms (Total Number: 292)	Room Size (m <sup>2</sup> )	Occupancy	Room Size* (m <sup>2</sup> )	Number of Rooms
Moderate (King)	2	30	36	
Superior (Twin)	2	42	119	
Superior (King)	2	42	21	
Deluxe (Twin)	2	44	16	
Deluxe (King)	2	44	16	
Premier (View Bath/Twin)	2	48	28	
Club Superior (Twin)	2	42	25	
Club Superior (King)	2	42	8	
Club Deluxe (Twin)	2	44	6	
Club Deluxe (King)	2	44	5	
Club Premier (View Bath/Twin)	2	48	5	
Corner Suite (View Bath/King)	2	67	2	
Deluxe Suite (King)	2	83	2	
Deluxe Corner Suite (Twin)	2	92	1	
Presidential Suite (Twin)	2	125	1	
Imperial Suite (King & Twin)	2	142	1	

### Restaurant "Symphony"

Opening Hours : 7am.-10:30a.m., 11:30a.m.-2:30p.m., 5:30p.m.-10p.m.  
Number of Seats: 146 (Dining : 84, 3 Private Rooms : 62)

### Lounge & Bar "HORIZON"

Opening Hours : 10am.-12am.  
Number of Seats : 76 (Table Seats: 70, Counter : 6)

### Japanese Restaurant "Ichimuan"

Opening Hours : 11:30am.-3p.m., 5:30p.m.-2:0p.m.  
Number of Seats : 105 (Dining : 58, Teppanyaki : 11, 4 Private Rooms : 36)

### Spa "flow spa"

Opening Hours : 11a.m.-8p.m.

### Conference & Banquet Rooms

Room Size (m <sup>2</sup> )	Ceiling Height(m)	Theatre	Classroom	Standing Banquet	Capacity
Grand Ballroom*	595	7.0	756	420	500 380
Hermitage	177	7.0	192	105	110 90
Tsuki	178	4.0	209	108	110 90
Miyabi	174	8.0	182	108	110 90
Vista	151	3.5	150	105	90 80
Hana / Yuki	119	4.0	126	60	70 60
Aoba / Hirose	120	3.5	126	63	70 60
HIKARI	69	3.5	56	30	-
The Crest	53	3.5	-	-	14

\*Subdividable.

### Work-out Gym

Opening Hours : 24 Hours, Daily  
Major Equipment : Treadmill, Elliptical Machine, Upright Bike, etc.

### Facilities

Chapel, Gift shop, Executive Lounge

### Information

1-9-1, Ichiban-cho, Aoba-ku, Sendai-shi, Miyagi 980-0811 Japan  
TEL +81-22-722-1234 www.marriott.com/sdji

#### ■ By Car

• About 15 minutes from Tohoku Expressway's Sendai-Miyagi IC.

#### ■ By Train

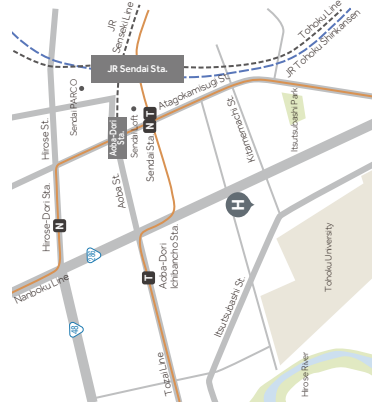
• About 6 minutes on foot from Sendai Station on the Subway Namboku Line, the Subway Tozai Line.

• About 9 minutes on foot from JR Sendai Station.

#### ■ By Plane

• About 50 minutes by car from Sendai Airport.

• By rapid-service train, the Sendai Airport Access Line links the terminal with Sendai Station in 17 minutes.



## Suiran, a Luxury Collection Hotel, Kyoto

In this space, combining modern beauty and the traditions cultivated through the history of Kyoto, you will be warmly greeted with our world-class hospitality.



Tsukinone Superior King

Guest Rooms (Total Number: 39)	Room Size* (m <sup>2</sup> )	Occupancy	Room Size* (m <sup>2</sup> )	Number of Rooms
Suigetsu Moderate Twin	2	40	1	
Tsukinone Superior Twin	2	39-40	10	
Tsukinone Superior King	2	39-49	10	
Yuzunoha Deluxe Twin with Open-Air Bath	3	38	6	
Yuzunoha Deluxe King with Open-Air Bath	3	38-47	6	
Kyo-Tsukikoto Premier-Japanese-Style Room	6	65	1	
Shirosunme Premier King with Open-Air Bath	2	59	1	
Aoiokibisuy Executive Suite with Open-Air Bath	2	62	1	
Togetsu Executive Suite with Open-Air Bath	2	60	1	
Gyokuto Garden Terrace-Japanese Style Suite with Open-Air Bath	2	71	1	
Suiran Presidential Corner Suite with Open-Air Bath	2	94	1	

\*Does not include terrace or garden area.

### Restaurant "Kyo-Suiran"

Opening Hours : 7a.m.-10a.m., 11:30a.m.-2:30p.m., 5:30p.m.-9p.m.  
Number of Seats : 56 (Dining : 42, Teppanyaki "kanzan" : 4, 1 Private Room : 10)

### Cafe "Saryo Hassui"

Opening Hours : 10am.-12a.m.  
Number of Seats : 34 (Table Seats: 24, Terrace : 10)

### Private Spa "Raku" "An" (Private Open-Air Bath)

Opening Hours : 6a.m.-12p.m., 3p.m.-12a.m.  
Spring Quality : Simple Hot Springs (Hypotonic Low Alkalinity)  
Efficacy : Neuralgia, Muscle Soreness, Joint Pain, Frozen Shoulder, etc.

### Facilities

Shop



SUIRAN HOTEL  
KYOTO



Restaurant "Kyo-Suiran"

Banquet Room	Room Size (m <sup>2</sup> )		Capacity	
	Standing	Banquet	Classroom	Banquet
Akane	98	3.0	98	48 52 80 48

### Information

12 Susukinobashi-cho, Sagar-Tenryuji, Ujyo-ku, Kyoto 616-8385 Japan  
TEL +81-75-875-0101 www.marriott.com/kyjc

#### ■ By Car

• About 35 minutes from Meishin Expressway's Kyoto-Higashi IC.

• About 25 minutes from Kyoto Jukan Expressway's Oharano IC.

#### ■ By Train

• About 15 minutes on foot from Saga-Arashiyama Station on the JR San'in Main Line, Sagano Line.

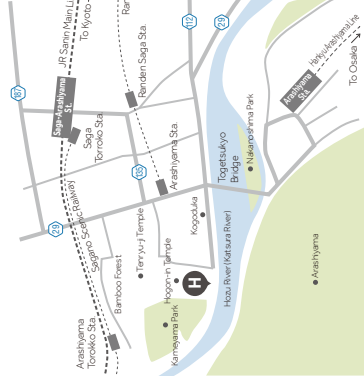
• About 15 minutes on foot from Arashiyama Station on the Hankyu Arashiyama Line (Randen).

• About 6 minutes on foot from Arashiyama Station on the Keifuku Arashiyama Line.

• About 35 minutes by taxi from Kyoto Station.  
The airport shuttle service is available at every Arashiyama station, as well as by taxi from JR Kyoto Station (by reserved only).

#### ■ By Plane

• About 110 minutes by taxi from Kansai International Airport.



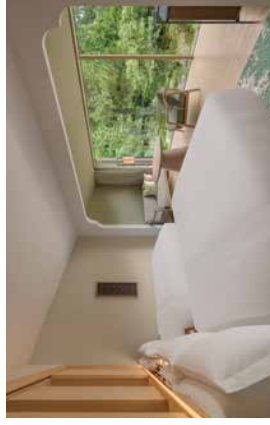
\*Opening hours may vary. \*The information is correct as of February 2023 and may be subject to change.



SHISUI HOTEL  
NARA

## Shisui, a Luxury Collection Hotel, Nara

To offer you an experience of the timeless essence of Nara, which has been passed down uninterrupted since ancient times, we bring out the best of both tradition and modern charm, providing a unique flow of time that can only be encountered here.



Standard Twin



Restaurant "Suiyou"

Guest Rooms (Total Number: 43)	Occupancy	Room Size* (m <sup>2</sup> )	Number of Rooms
Standard Twin	3	41	5
Standard King	3	40-41	12
Superior Twin	3	43	1
Superior King	3	46	2
Deluxe Twin with Hot-Spring Bath	3	41-49	3
Deluxe King with Hot-Spring Bath	3	41-49	6
Deluxe Twin with Open-Air Bath	3	43	2
Deluxe King with Open-Air Bath	3	43-46	4
Junior Suite Room with Hot-Spring Bath	3	53-61	4
Junior Suite Room with Open-Air Bath	3	57	1
Suite Room with Hot-Spring Bath	3	64	2
Presidential Suite Room with Hot-Spring Bath	3	98	1

### Spa "SUI Spa"

Opening Hours : 2p.m.-10p.m.

### Private Spa "Hakurui" "Konrui" (Private Open-Air Bath)

Opening Hours : 6a.m.-11a.m., 3p.m.-11p.m.

Spring Quality : Simple Hot Springs

Efficacy : Neuralgia, Muscle Soreness, Joint Pain, Frozen Shoulder, etc.

### Facilities

Souvenir Shop

### Information

62 Noboritōji-cho, Nara-shi Nara 650-8213 Japan  
TEL +81-742-92-6511 www.marriott.com/osan

#### ■ By Car

- About 26km from Meihan Expressway's Yamazoe IC.
- About 48km from Nara Jukan Expressway's Oharano IC.

#### ■ By Train

- Take the bus from JR Nara Station to "Kencho Higashi" and walk 3 minutes.
- About 15 minutes on foot from Kintetsu Nara Station.

#### ■ By Plane

- About 75 minutes by taxi from Kansai International Airport.

### Restaurant "Suiyou"

Opening Hours : 7a.m.-10a.m., 12p.m.-2:30p.m., 5:30p.m.-9p.m.

Number of Seats : 54 (Dining : 32, 2 Semi-Private Room : 12, Private Room "Shitan" : 10)

### Sushi & Bar "Shousou"

Opening Hours : 12p.m.-2:30p.m., 5:30p.m.-9p.m.

Number of Seats : 8

### Cafe "Zeze"

Opening Hours : 11a.m.-5p.m.

Number of Seats : 43



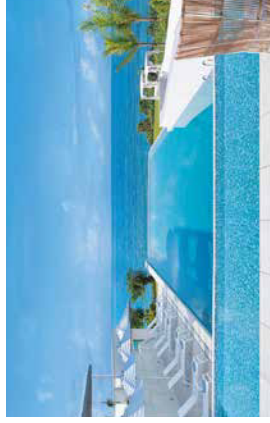
\*Opening hours may vary. \*The information is correct as of February 2025 and may be subject to change.

## IRAPH SUI, a Luxury Collection Hotel, Miyako Okinawa

Only here can one experience an ocean coral reef unfolding amid island fragrances and a sky full of stars—all in world-class comfort.



Upper Ocean View Room (Twin)



Pool

Guest Rooms (Total Number: 58)	Occupancy	Room Size* (m <sup>2</sup> )	Number of Rooms
Garden Room with Jet Bath (Twin)/ Ocean View Room (Twin)	3	45	9
Upper Ocean View Room (Twin)	3	45	27
Garden Junior Suite with Pool (Twin)	3	67	6
Oceanfront Junior Suite (Twin)	3	66	2
Ocean View Corner Junior Suite (King)	3	76	5
Oceanfront Corner Junior Suite (Twin)	3	71	1
Garden Corner Suite with Pool (Twin)	4	98	2
Irapp Coral Suite (Twin)	4	103	1
Miyako Garden Suite with Pool (Twin)	4	119	1
Dog Friendly Room (Twin)	3	45	3
Dog Friendly Corner Junior Suite (King)	3	76	1

\*Does not include pool, balcony, etc.

### Restaurant "TIN'IN"

Opening Hours : 7a.m.-10:30a.m., 11:30a.m.-3:30p.m., 5:30p.m.-9p.m.

Number of Seats : 100 (Dining : 82, Terrace : 18)

### Fitness Center

Opening Hours : 24 Hours, Daily

Major Equipment : Treadmill, Upright Bike, etc.



**Information**  
818-51 rabu rabu Naga-sokobaru, Miyakojima-Shi, Okinawa 906-0803 Japan  
TEL +81-980-74-5511 www.marriott.com/okalc

#### ■ By Plane

- About 10 minutes by car from Shimojishima Airport.
- About 20 minutes by car via Irapu Ohashi from Miyako Airport.

#### Access to Miyako Airport

- About 3 hours by direct flight from Haneda Airport.
- About 2 hours 30 minutes by direct flight from Kansai International Airport.
- About 2 hours 40 minutes by direct flight from Chubu Central International Airport.
- About 2 hours by direct flight from Fukuoka Airport.
- About 50 minutes from Naha Airport.

\*Free courtesy pickup is available from Miyako Airport and Shimojishima Airport. (By reservation only).

\*Opening hours may vary. \*The information is correct as of February 2025 and may be subject to change.

## Ryokan Karaku, Gion Kyoto

Located in the highly popular "Gion and Higashiyama" area of Kyoto, this is an exceptional location. Enjoy a blissful moment of relaxation in a warm, traditional Japanese space, and immerse yourself in the tranquility of your journey.



Bed Type Japanese Room (Twin)

Guest Rooms (Total Number:19)	Occupancy	Room Size* (m <sup>2</sup> )	Number of Rooms
Standard Japanese Room	6	35-41	8
Bed Type Japanese Room (Hollywood Twin)	5	41	1
Bed Type Japanese Room (Twin)	2	24-26	2
Superior Japanese Room	4	29-30	5
Special Japanese Room on the Top Floor with a View Bath	4	39-43	3

## Restaurant

Opening Hours : 7:30a.m.-9a.m. (Sundays, Holidays : from 7a.m.), 12p.m.-2p.m. (Group Reservations Only), 5:30p.m.-9p.m.  
Number of Seats : 20



Restaurant

## Banquet Rooms

	Room Size (m <sup>2</sup> )	Ceiling Height (m)	U-Shape	Hollow-Square	Class Room	Banquet
Kakitsubata / Kikutani	63	2.6	30	36	72	50
Kakitsubata	32	2.6	18	24	30	25
Kikutani	32	2.6	18	24	30	25
Karaku	24	2.5	16	20	24	20

## Library

Opening Hours : 24 Hours, Daily  
Equipment : Tourist Information Brochure, Magazine, Children's Picture Book

## Facilities

Shop

## Information

499 Gion-machi Minamigawa, Higashiyama-ku, Kyoto City, Kyoto 605-0074 Japan  
TEL+81-75-341-2525 www.gion-kyoraku.com/en

- By Car
  - About 8km from Meishin Expressway's Kyoto-Higashi IC.
  - About 9km from Meishin Expressway's Kyoto-Minami IC.
- By Train
  - Take the bus from JR Kyoto Station to "Gion" and walk about 5 minutes.
  - About 15 minutes on foot from Kyoto-Kawaramachi Station on the Hankyu Kyoto Line.
  - About 12 minutes on foot from Gion-Shijo Station on the Keihan Main Line.



\*Opening hours may vary. \*The information is correct as of February 2025 and may be subject to change.

## Gora-Kansuiro

The former villa of the Mitsubishi zaibatsu Iwasaki family was acquired and opened in 1949. Enjoy kaiseki cuisine made with fresh seasonal ingredients, as well as the healing waters from our own hot spring source. Take your time to appreciate the beauty of the Japanese garden, which offers a different charm with each season.



Matsu



MEGURI(ROTEN)

## Guest Rooms (Total Number:14)

HANARE	Occupancy	Room Size (m <sup>2</sup> )	Number of Rooms
Kinkatai / Hashuan	4-9	60	1
Myosho	2-3	20	1
Yonamichi	2-4	23	1
Santei	2-3	22	1

## SHUU-TEI

Occupancy	Room Size (m <sup>2</sup> )	Number of Rooms
Tsuki	1-3	15
Sakura	2-4	25
Yuri	2-3	16

## ISSHO-TEI

Occupancy	Room Size (m <sup>2</sup> )	Number of Rooms
Kasei	2	12
Kodachi	2-4	20
Matsu	4-8	49
Saikyoku	2-4	20
Ume	2-4	18
Sugi	1-3	10
Take	1-3	16

## Restaurant "Momiji"

Opening Hours : 7:30a.m.-9a.m., 5:30p.m.-8:50p.m.  
Number of Seats : 22

## Hot-Spring Bath

Opening Hours : [ROTEN "MEGURI" / "MIDOU"] 6a.m.-9:30a.m., 3p.m.-10p.m.  
[JOINT "TATSUKI" / "HYOUTAN"] 3p.m.-12a.m., 12a.m.-10a.m.  
\* Separate bathing by gender (Shift system)  
[JOINT] Simple Hot Springs  
Efficacy : Neuralgia, Muscle Soreness, Joint pain, Frozen Shoulder, etc.

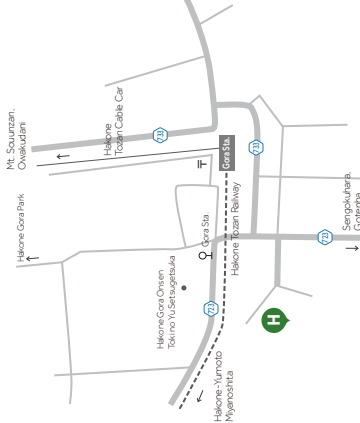
## Facilities

Garden "Kasei-en"

## Information

1300 Hakone-Machi Gora, Ashigarashimo-gun, Kanagawa 250-0408 Japan  
TEL +81-460-82-3143 https://gourakansuiro.co.jp/en/

- By Car
  - About 10km via the Odawara-Atsugi Road, Nishi-Sho Bypass, and Odawara-Hakone Road, from the Yamazaki IC via National Route 1.
  - About 17km from Tomei Expressway's Gotemba IC.
- By Train
  - From Odawara Station on the Tokaido Shinkansen or Hakone-Yamanashi Station on the Odakyu Line, transfer to the Hakone Tozan Railway and get off at Gora Station. About 3 minutes on foot from there.



\*Opening hours may vary. \*The information is correct as of February 2025 and may be subject to change.

## Hotel Indigo Nagasaki Glover Street

Breathing new life into the symbol of Minami-Yamate in Nagasaki, this hotel is born. With a design that reflects Nagasaki's history and culture, the Cathedral restaurant with sparkling stained glass offers innovative gastronomy. Experience the passage of time and immerse yourself in the vibrant culture.

**HOTEL  
INDIGO**  
AN IHG HOTEL  
NAGASAKI GLOVER STREET



Standard Twin North Building



Premium Twin Main Building

### Guest Rooms (Total Number:66)

Room Type	Occupancy	Room Size (m <sup>2</sup> )	Number of Rooms
Standard King Main Building	2	26-34	10
Premium Twin Main Building	2-3	35-49	12
Premium King Main Building	2	28-30	2
Premium Twin with Terrace Main Building	2-3	37-48	4
Azure Bay View Suite	2-3	55	1
We-Ka-Ran Bay View Suite	2-3	61	1
Kapitan Garden Terrace Suite	2-3	67	1
Standard King North Building	2	33	4
Standard Twin North Building	2-3	31-33	28
Premium Twin North Building	2-3	37-39	3

### Fitness Gym

Opening Hours : 24 Hours, Daily

### Facilities

Lounge, Garden Terrace

### Information

12-17 Minamiyamate-Machi, Nagasaki-SHI, Nagasaki 850-0931, Japan  
TEL+81-95-995-9510 <https://nagasaki.hotelindigo.com/en/>

- By Car
  - About 5km from Nagasaki Expwy's Nagasaki IC.
- By Train
  - About 10 minutes by taxi from Nagasaki Station.
  - Access to Nagasaki Station from Hakata Station
    - About an hour on the JR Kyushu Main Line Limited Express Relay Kanome, transfer at Takao Onsen and take the JR West Kyushu Shinkansen for 30 minutes ride.

- By Plane
  - Take the Highway Express Bus from Nagasaki Airport. It is a roughly 40 minute trip to the Shinchi Chinatown bus stop, where you are dropped off. From there, it is a five-minute taxi ride to the hotel.



Restaurant Cathedral

### "Restaurant Cathedral"

Opening Hours : 7a.m.-11a.m., 12p.m.-3p.m., 5:30p.m.-10p.m.  
Number of Seats : 74 (Dining : 64, 1 Private Room : 10)

\*Opening hours may vary. \*The information is correct as of February 2023 and may be subject to change.



**Mori Trust Hotels & Resorts Co., Ltd.**

**TOKYO OFFICE**

Gotenyama Trust Tower, 4-7-35, Kitashinagawa, Shinagawa-Ku, Tokyo 140-0001 Japan  
TEL +81-3-6409-2841 FAX +81-3-6409-2813

**OSAKA OFFICE**

Shin-Osaka Trust Tower, 3-5-36, Miyahara, Yodogawa-Ku, Osaka-Shi, Osaka 532-0003 Japan