
Everything you must know about PARIS !

“Capital of the arts,” “the city of lights,” “one of the most beautiful cities in the world,” to name but a few! Paris is worldwide famous for its enormous cultural wealth that it owes not only to its fascinating history but also to its age-long heritage. When considering the city’s monuments, museums, buildings, libraries, or famous residents, visitors are transported through time and space...

Here are some monuments and areas not to be missed!

The Eiffel Tower



Lightings every hour



French presidency of the European Union

For the 1889 Universal Exhibition, one hundred years after the French Revolution, the Official Newspaper launched a major competition to “study the possibility of erecting an iron on the Champ de Mars. The tower should have a square base, 125m on each side and 300m high”. The project proposal by entrepreneur Gustave Eiffel, engineers Maurice Koechlin and Emile Nouguien and architect Stephen Sauvestre was chosen out of a total of 107.

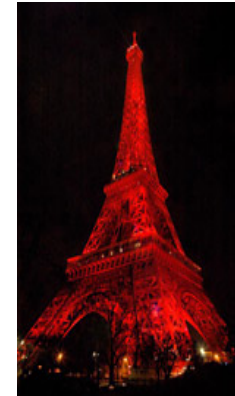
Although the tower started as an attraction in the 1920s, it became a symbol of modernity. Little by little its image became associated with Paris, and eventually became the city’s symbol throughout the world.

Since 1998, over 6 million people per year have visited the “Grand Iron lady”. In 2003 the tower celebrated its 200 millionth visitor over 114 years.

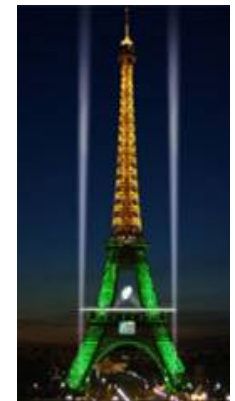
Because of its size and structure, the Eiffel Tower has inspired extremely sophisticated and original lighting innovations as the pictures exemplify.

Some figures: it weighs more than 10,000 tones, has 16,665 steps and requires 50 tones of painting every 7 years!

- *It's a ten-minute walk away from ECE!*
- *Enjoy walking from the Eiffel Tower to Trocadéro and contemplate the splendid view of the tower.*
- *Metro stop : M6 Bir Hakeim / RER C: Champ de Mars*



Chinese New Year



Rugby World Cup - 2008

The Orsay Museum

The museum was transferred to the old train station of Orsay and inaugurated in 1986. Most French Museums aim at presenting a wide range of artistic creations: namely paintings, sculptures, graphic arts and art objects. The Orsay Museum displays a panorama of French and European art ranging from 1848 to 1914.



→ Metro stop: RER C Musée d'Orsay / M12 Assemblée Nationale

The Invalides

Founded by Louis XIV to shelter 7,000 reformed soldiers, this establishment hosted wounded or disabled soldiers as well as all those who had 20 years of service (that's why it's called a hostel). The hostel is famous for its dome covered with more than 555,000 gold leaves.

Behind the dome is the sarcophagus of Napoleon after it was transferred from Saint Helene in 1840. The French Army Museum across the *Invalides* displays Napoleon's uniforms, arms and some personal objects. Only 100 boarders are still living in the hostel.



→ Metro stop: RER C Invalides / M8 / 13 Invalides

Notre-Dame-de-Paris / Ile de la Cité

Notre Dame de Paris is on the *Ile de la Cité*. The *Ile de la cité* corresponds to the heart of Paris; it was the capital of Lutecium, its Medieval ancestor. The *ile de la cité* was the cradle of Gaul's lutetium and the birthplace of the Roman River Trade, which, from the 1st century onwards, has made the Parisian boaters wealthy.

In the 9th century, small churches were built on the square in front of the cathedral to protect relics from Norman pillages. Around 1100, there were about 3,000 inhabitants living on the *Ile de la Cité*: clerks, ecclesiastical schools, and servants of the Royal Place.

In the 12th century, Maurice de Sully, who was a bishop of Paris at the time, launched the construction of a new Cathedral on the site of two former places of worship: Notre Dame de Paris and Saint Stephen.



→ Metro stop: M4 Cité

Latin Quarter, Saint Germain des Près

The Latin Quarter and the Saint *Germain des Près* area are filled with fascinating museums and overwhelming monuments: The Arabic World Institute, The Cluny Nuseum, The National Museum of Natural History of and the Jardin des plantes.

This quarter symbolises the city's artistic and intellectual life. In fact during the twenties, the *Saint Germain* quarter was the favourite meeting place of students, artists and writers.



→ Metro Stop: M4 St-Germain des-Près / Odéon / Saint-Michel

Champs-Élysées / Arc de Triomphe

The avenue links the Arc de Triomphe to La Concorde. It has been called the most beautiful avenue of the world. It is a district of offices, cinemas and restaurants.

When looking at it from the top of the Arc de Triomphe, you will understand why the spot is called “étoile” or “star spot”. Indeed twelve avenues all converge towards the arc. The Monument in memory of the Great Army was ordered by Napoleon. Many soldiers have been honoured and the body of an anonymous soldier who served during WWI is actually buried there. A flame is constantly lit in memory of all those who died at war.



→ Metro Stop: M1 / 6 Charles de Gaulle Etoile



ECOLE D'INGENIEURS GENERALISTE ET HIGH-TECH

ece
— GROUPE ECE —

Place de la Concorde

Originally named Place Louis XIV since its inauguration by the monarch in 1764. In 1795, the location was renamed “Place de la Concorde” the new name symbolized national reconciliation after the French Revolution.

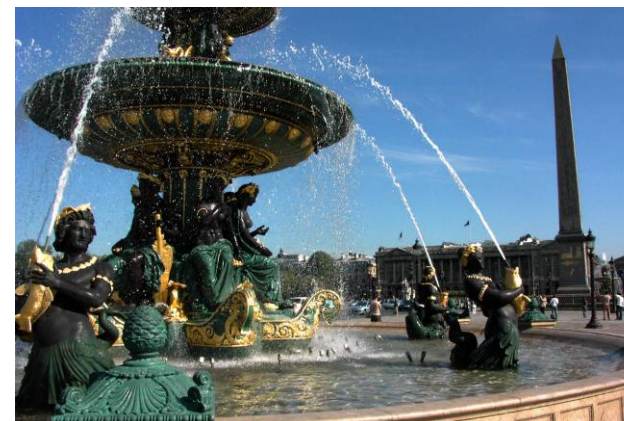
The site used to host popular celebrations. Its became a harsh reminder of much more violent events as Louis XVI, Danton, Robespierre and many others were beheaded there.

Louis Philippe wished to reunite republicans and royalists. He chose to raise in the middle of the place an obelisk from Luxor, a neutral monument, offered by Mohamed Ali. This obelisk comes from the Ramses II Temple.

All the statues decorating the place represent 8 French big cities (Marseille, Lyon, Bordeaux, Nantes, Rouen, Brest, Lille and Strasbourg). The two bright fountains, copies of those found on the St Pierre piazza in Rome, symbolize fluvial navigation and the navy in general.

→ *Behind this place you have the Tuileries Gardens which give access to the Louvre Museum*

→ *Metro Stop: M1 Concorde*



The Louvre Museum

It is probably the biggest and the most famous museum in the world. The museum owns 7,000 European artistic works, and overall 300,000 artworks, of which 35,000 are displayed (the remaining others are drawings which cannot be exhibited for more than 3 months in a row for fear of damage)

The museum is divided into 7 departments: Egyptians Antiques, Greeks antiques, Romans antiques, paintings, sculptures, art objects and graphic arts.



→ Metro Stop: M1 Palais Royal Musée du Louvre / Louvre Rivoli

Bastille

- The Column of July:

In 1833, Louis-Philippe decided that a column would be set up in the middle of the place, to honour the revolutionaries who died during the “Trois Glorieuses”.

The edifice was inaugurated on 28 April 1840. At the top, a colossal gilded figure stands over a gilded globe. This *Génie de la Liberté* ("Spirit of Freedom") is perched on one foot and brandishes the torch of civilisation and the remains of his broken chains. The pedestal is decorated with bas-reliefs.

- The Bastille Opera:

During the 1980s a new opera was much needed and consequently, an international competition was launched. A Canadian-Uruguayan architect was selected among 765 other candidates.

The inauguration took place on 13 July 1989 for the 200th anniversary of the French Revolution.

→ Metro Stop: M1 / 5 / 8 Bastille



Place des Vosges

Place des Vosges is 10 minutes away by foot from the *Bastille*. According to Parisians, it is one of the most beautiful and romantic places of Paris. This place is at the heart of the Marais quarter.

Surrounded by arches, place of Vosges served as a place for public meetings. There is a statue of Louis XVIII right in the middle of it. Everything around the square you will find numerous cafes, restaurants, antique dealers, and shops.

→ Metro Stop: M1 Saint Paul



Garnier Opera

Built between 1861 and 1875 by Charles Garnier, the Opera of Paris is a baroque example of neoclassicism with its richly decorated facade, its monumental staircases and Italian-like hall. The ceiling was painted by Chagall.

The opera is a music and dance academy devoted to performing arts.



→ Metro Stop: M8 / 7 / 3 Opéra

Montmartre / Sacré Coeur

Montmartre is famous for its artists, and in particular for the 19th and 20th century painters who lived there (because the rent was cheap).

At the top of the *Montmartre hill*, the *Sacré Coeur* offers a fantastic view of the city. The basilica is a pilgrimage place where the chaplains and Benedictine sisters welcome pilgrims and all Christians all year long.

The *Moulin Rouge* (where French cancan was born) is located down the *Montmartre hill*, in *Pigalle*.

→ Metro Stop: M12 / 2 Pigalle / Abesses / Anvers



City Map

+ ECE

1. Eiffel Tower
2. Orsay Museum
3. Invalides
4. Notre-Dame-de-Paris
5. St Latin Quarter / St Germain des Près
6. Champs Elysées / Charles de Gaulle Etoile
7. Concorde
8. Museum Louvre
9. Bastille
10. Garnier Opera
11. Montmartre



An other way to visit Paris

- Cars Rouges:

Discover Paris and its main sights at your own pace! The Cars Rouges offer you a circuit by coach lasting around 2hours 15minutes, including 9 stops and with a commentary in French, English... Your ticket is valid for two consecutive days and allows you to get on and off the double-decker buses as you wish, with open upper decks providing an outstanding view!

- Regular tourist coach service to visit Paris.
- Tours in English and French. 9 stops on a tour lasting 2hours 15. Every day from 9 am to 7 pm.
- Tickets valid for 2 days are available on the bus and at the Paris Tourist and Congress Office.

Price for one Adult : 22€

→ 17, quai de Grenelle

75015 Paris (The school 's address is 37 quai de Grenelle, right close to it)



ECOLE D'INGENIEURS GENERALISTE ET HIGH-TECH

ece
— GROUPE ECE —

An other way to visit Paris

- Open Tour:

Open tour offers you four different tours with commentaries in French and English: the “Paris Grand Tour”, to see all the main Parisian sights, “Montparnasse-Saint Germain”, for a tour of the Left Bank, “Bastille-Bercy”, for a glimpse of more up-to-date architecture and “Montmartre-Grands Boulevards”, to visit one of the city’s celebrated districts.

On board a double-decker bus, take advantage of the magnificent view from the upper deck.

→4 tours around Paris totalling up to more than 50 stops.
PARIS GRAND TOUR : approx. 2hrs 15 and services the main places of interest in the capital. Individual earphones provide commentary in French and English throughout the tour.
TOUR MONTPARNASSE-ST GERMAIN : Left bank of the Seine and its Latin quarters.
TOUR MONTMARTRE-GRANDS BOULEVARDS : Butte Montmartre, Gare de l'Est and Gare du Nord, Place de la République.
TOUR BASTILLE-BERCY : Saint-Paul, Place de la Bastille, Gare de Lyon, the Parc de Bercy, Gare d'Austerlitz, Bibliothèque Nationale de France.

Price Adult 1 Day : 29 €

Price Adult 1 Day : 32 €



ECOLE D'INGENIEURS GENERALISTE ET HIGH-TECH

ece
— GROUPE ECE —

An other way to visit Paris

- Bateaux Mouches:

On those boats you can take a simple sightseeing cruise or lunch or dinner cruise to discover the banks of the Seine and famous Parisian bridges and monuments. A standard sightseeing cruise lasts for just over an hour, with commentary in French and in English. The lunch cruise (around 1hour45) and the dinner cruise (around 2hours 15) are an excellent way to enjoy a gentle cruise and diner at the same time!

Cruise with commentary, lunch and dinner cruises. Discover or rediscover all the magic of the banks of the Seine where you will see the most prestigious monuments which marked history. The company Bateaux Mouches has 14 boats that go back and forth across Paris throughout the year, all throughout the day and in the evening. Our on board catering service prepares all the traditional French dishes on our menus. All our tables are placed on the edge of the Seine to let each of our customers enjoy the beauty of Paris in complete comfort. A large car park on the quay is available for customers to use for the length of the cruise.

- Boat Promenade: 10€
- Lunch: 50€
- Prestige Dinner: 95€

→ Metro Stop: RER C Pont de l'Alma / M9 Alma Marceau



Shopping

- Here are 3 mythic department stores:

- Galerias Lafayette :

- 40 boulevard Haussmann 75009 Paris

- Printemps:

- 64 Boulevard Haussmann 75009 Paris

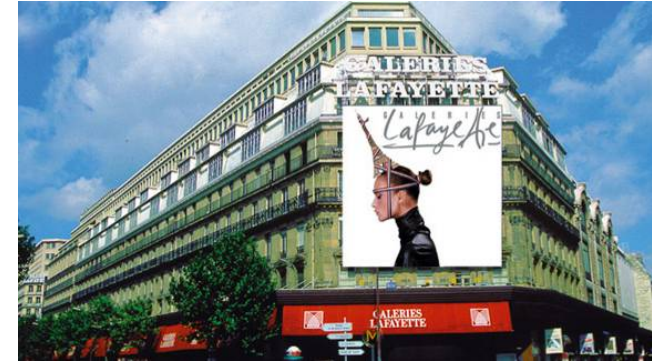
→ *In those two stores it's possible to climb up to the last floor and reach the roofs of the store and get a breathtaking view of Paris.*

→ *Subway Station: M3 / 9 Havre Caumartin / RER A Auber*

- Bon Marché:

- 24 rue de Sèvres 75007 Paris

→ *Metro Stop: M12 / 10 Sèvres Babylone*





Feel free to contact us for further information

Hoping to see you soon!
Contact: **smayet@ece.fr**