

VISITOR INFORMATION

CONFERENCE/MEETING CONVENTION PLANNING

Park County welcomes you and is pleased to extend our famous western hospitality to help you plan your event.

- The Cody Country Chamber of Commerce, located at 836 Sheridan Avenue, can provide convention bags and the best advice on where to go and what to do while in the area. Call (307) 587-2777.
- The City of Cody office, located at 1338 Rumsey, is cooperative in assisting with special requests such as parades or using city parks and facilities. Call (307) 527-7511.
- The Powell Valley Chamber of Commerce, located at 111 S. Day Street, provides welcome bags, discount coupons and assists with plans and activities in Powell. Call (307) 754-3494.
- Meeteetse Visitor Center, located at 2005 Warren Avenue, can provide for all your meeting and convention needs. Call (307) 868-2454.
- The Park County Travel Council, located at 836 Sheridan Avenue, is available to assist with touring facilities, coordinating arrangements and assuring your event is a success. Call (307) 586-1574.

WHAT TO WEAR

Park County has warm summer temperatures in the day time with cool nights. Lightweight jackets are usually required after sunset. Spring and fall have a variety of weather conditions from Indian summer to snowfall possible. Being prepared for almost any weather condition will assure a pleasant experience.

LOCATION

Cody is located in the northwest corner of Wyoming, in what is known as Buffalo Bill's Yellowstone Country. Powell is located 22 miles northeast of Cody and Meeteetse is located 30 miles south.

Mileage from Cody to:

Yellowstone National Park	52 Miles
Billings, Montana	110 Miles
Casper, Wyoming	215 Miles
Cheyenne, Wyoming	415 Miles
Denver, Colorado	492 Miles
Rapid City, South Dakota	460 Miles
Salt Lake City, Utah	445 Miles
Sheridan, Wyoming	175 Miles

PARK COUNTY GOVERNMENT

Cody

Bureau of Land Management	(307) 578-5900
Bureau of Reclamation	(307) 527-4200
City of Cody	(307) 527-7511
Cody Chamber of Commerce	(307) 587-2777
Park County Courthouse	(307) 527-8500
Wyoming Game & Fish	(307) 527-7125
Shoshone National Forest	(307) 527-6241

Powell

City of Powell	(307) 754-5106
Powell Chamber of Commerce	(307) 754-3494

Meeteetse

Town of Meeteetse	(307) 868-2278
Meeteetse Visitor Center	(307) 868-2454

ELECTED OFFICIALS

Governor Matt Mead	(307) 777-7434
Senator Mike Enzi	(307) 527-9444
Senator John Barraso	(307) 672-6456
Representative Liz Cheney	(202) 225-2311
Park County Commissioners	(307) 527-8500
Mayor of Cody	(307) 527-7511
Mayor of Powell	(307) 754-5106
Mayor of Meeteetse	(307) 868-2278



VISITOR SERVICES

AIRLINES

Airline service at Yellowstone Regional Airport is provided by the following airlines:

Delta Airlines	(800) 221-1212
United Airlines	(800) 241-6522

AREA TRAVEL AGENTS

Powell

Omega World Travel	(307) 754-5138
--------------------	----------------

BANKING SERVICES

The following institutions offer financial services and automatic teller machines:

Bank of Powell	Powell	(307) 754-2774
Bank of the West	Cody	(307) 587-2243
	Powell	(307) 754-2282
	Meeteetse	(307) 868-2521
Big Horn Federal	Cody	(307) 587-5521
	Powell	(307) 754-9501
Elk Basin FCU	Powell	(307) 754-9814
First Bank of Wyoming	Cody	(307) 587-3800
	Powell	(307) 754-2201
Pinnacle Bank	Cody	(307) 527-7186
	Powell	(307) 754-7955
River-Rail FCU	Powell	(307) 754-9814
State Farm Bank	Powell	(307) 754-9541
Sunlight FCU	Cody	(307) 587-4915
	Powell	(307) 754-7191
US Bank	Cody	(307) 527-9621
Valley FCU	Cody	(307) 587-2274
Wells Fargo Bank	Cody	(307) 527-2648
	Powell	(307) 754-2116

HOSPITALS

Cody Regional Health	(307) 527-7501
707 Sheridan Ave., Cody	
Urgent Care Clinic	(307) 578-2903
424 Yellowstone Ave., Cody	
Veterans Administration Clinic	(307) 587-4015
1432 Rumsey Ave, Cody	
Powell Valley Hospital	(307) 754-2267
777 Avenue H., Powell	
Express Care Clinic	(307) 754-7708
777 Avenue H., Powell	
Banner Health Clinic Family Medicine	(307) 868-2272
2103 State Street, Meeteetse	

CAR RENTALS

Avis Rent-A-Car	(307) 587-4082
Budget Rent-A-Car	(307) 587-6066
Dollar Rent-A-Car	(307) 587-3604
Hertz Rent-A-Car	(307) 587-2914

GROUND TRANSPORTATION, BUS, AND TAXI SERVICES

Cody Cab	(307) 272-8364
Cody Nite Rodeo Bus	(307) 272-5573
Cody Shuttle Service	(307) 527-6789
Cody's Town Taxi	(307) 250-3939
Marquis Sedan Service	(307) 254-2357
Yellowstone Quake Bus	(307) 250-1125

TOURS

Cody

Choice Aviation	(307) 587-9262
Cody Shuttle Service	(307) 527-6789
Cody Trolley Tours	(307) 527-7043
Cody Wyoming Adventures	(307) 587-6988
Experience Yellowstone	(307) 272-6671
Hidden Treasure Charters	(307) 899-1401
National Park History Tours	(307) 527-7208
Tour Yellowstone	(307) 527-6316

Powell

Agriculture Tours	(307) 754-3494
-------------------	----------------

Meeteetse

Meeteetse Museums	(307) 868-2423
-------------------	----------------

Offers area tours including:

Legend Rock State Petroglyph Site

June 8th

Historic Double Dee Guest Ranch/Amelia Earhart Tour

July 21st

Historic Pitchfork Ranch Tour

July 28th

Kirwin Ghost Town

August 11th

MEDIA

Newspapers

Cody Enterprise	(307) 587-2231
Powell Tribune	(307) 754-2221

Radio

Big Horn Radio Network	(307) 578-5000
<i>KCGL/KZMQ/KTAG</i>	
KODI	(307) 754-5728
KPOW	(307) 754-5183
White Park Broadcasting	(307) 764-3771

ACTIVITIES & ATTRACTIONS

OUTDOOR RECREATION

Cody

Absaroka Bikefitters & Backcountry Guides	(307) 899-7425
Airborne Over Cody Powered Hang Gliding	(307) 899-3659
Buffalo Bill Horse Rides	(307) 250-7660
Cedar Mountain Trail Rides	(307) 527-4966
Cody Archery Range	(307) 899-6919
Cody Country Outfitters & Guides Assoc.	(307) 587-6054
Cody Shooting Complex	(307) 587-5236
Gary Fales Outfitting Snowmobile Tours	(307) 587-3970
Gradient Mountain Sports	(307) 587-4659
Hidden Treasure Charters	(307) 899-1401
The Mountain Guides Cody	(800) 239-7642
Miniature Golf	(307) 587-0400
North Fork Anglers	(307) 527-7274
North Fork Nordic Trails	(307) 296-7171
Tread 'N' Trails ATV Rentals	(307) 272-1014
Olive Glenn Golf and Country Club	(307) 587-5551
Red Canyon River Trips	(307) 587-6988
River Runners of Wyoming	(307) 527-7238
Rocky Mountain Backroads Adventures	(307) 254-1438
Shoshone National Forest	(307) 527-6241
Sleeping Giant Ski Area & Zipline	(307) 587-3125
Sunlight Sports	(307) 587-9517
Wyoming Outdoor Adventures	(307) 272-6459
Wyoming River Trips	(307) 587-6661
Yellowstone National Park	(307) 344-7311

Meeteetse

Wood River Valley Ski Touring Park	(307) 868-2603
------------------------------------	----------------

Powell

Homesteader Park ice skating	(307) 754-5711
Powell Golf Club	(307) 754-7259

INDOOR ACTIVITIES

Cody

Big Horn Cinemas	(307) 587-8009
Paul Stock Aquatics & Recreation Center	(307) 587-0400
Riley Ice Arena Ice Skating & Hockey	(307) 587-1681
Super Bowl (bowling alley)	(307) 587-5310

Powell

Powell Aquatic Center	(307) 754-0639
Powell Recreation District	(307) 754-5711
Vali Twin Cinema	(307) 754-4211

Meeteetse

Meeteetse Rec Center	(307) 868-2603
----------------------	----------------

FINE ART GALLERIES

Cody

Big Horn Galleries	(307) 527-7587
By Western Hands	(307) 586-1755
Cody Country Art League	(307) 587-3597
North Mountain Gallery	(307) 272-5319
Open Range Images	(307) 587-8870
Simpson Gallagher Gallery	(307) 587-4022
Timmer Art Gallery	(586) 604-6314

Powell

Rising Sun Arts	(307) 754-4815
Vic Payne Studio	(307) 754-2658

ATTRACTIONS, MUSEUMS AND SPECIAL PLACES

Cody

Buffalo Bill Center of the West	(307) 587-4771
Buffalo Bill Dam & Visitor Center	(307) 527-6076
Cody Dug Up Gun Museum	(307) 587-3344
Cody Firearms Experience	(307) 586-4287
Cody Heritage Museum	(307) 586-4272
Historic Cody Mural & Museum	(307) 587-3290
Cody Nite Rodeo	(307) 587-5155
Irma Hotel	(307) 587-4221
K3 Guest Ranch Half-Day Ranch	(307) 587-2080
Old Trail Town and Museum	(307) 587-5302
Pahaska Teepee Lodge	(307) 527-7701
State of Wyoming Veterans Memorial Park	(307) 587-0400

Powell

Heart Mountain WWII Interpretive Center	(307) 754-8000
Homesteader Museum	(307) 754-9481
Powell H.S. Veterans Memorial Park	(307) 754-9417

Meeteetse

Meeteetse Museums	(307) 868-2423
Kirwin Ghost Town	(307) 868-2423
Meeteetse Chocolatier	(307) 868-2567

ENTERTAINMENT

The Wild Bunch. A fun western re-enactment that involves the crowd and always ends in gunfire! Monday through Saturday at 6:00 pm at the Irma Hotel, June through September. This event is free.

Cody Nite Rodeo. Nightly rodeo action June through August at 8:00 pm. Tickets are \$20 Adults, \$10 (7-12).

Dan Miller's Cowboy Music Revue. Family entertainment offering Americana, bluegrass, songs of the American West, and cowboy poetry. Performances at 8:00 pm. Monday through Saturday, June thru September in downtown Cody. Tickets \$17.

The Cody Cattle Company. Lively show featuring traditional cowboy music in a family-friendly setting. The evening may include an all-you-can-eat buffet dinner. One show nightly at 6:30, June through September 22. Show Only tickets \$16 Adults, \$8 (12 and under); Dinner and Show tickets \$30 Adults, \$15 (12 and under); Dinner, Show and Rodeo \$47 Adults, \$25 (12 and under).

Concerts in the Park. Cody's City Park offers a free summer concert series with a variety of entertainers. Thursday evenings from 6:30—8:30 pm in July and August.

MEETING FACILITIES

CONVENTION CENTERS & MEETING FACILITIES

Cody

The Park County School District #6 has a variety of options for groups up to 2227 people. Please contact (307) 587-6110 for further information.

Victor J. Riley Arena & Community Event Center (307) 587-1681
up to 1725 people

Paul Stock Aquatic & Recreation Center (307) 587-0400
up to 1266 people

Cody Auditorium (307) 527-5363
up to 500 people

The Cody Cattle Company (307) 272-5770
up to 500 people (catering available)

Holiday Inn Convention Center (307) 587-3654
up to 500 people (2 separate rooms, catering available)

The Commons (307) 754-5106
up to 300 people

Buffalo Bill Center of the West (307) 578-4000
up to 300 people (catering available)

Geysers on the Terrace (307) 899-5755
up to 200 people (catering available)

Cody Club Room (307) 587-0400
up to 130 people

Big Horn Federal Savings Bank Boardroom (307) 587-5521
up to 130 people (after banking hours only)

Boot & Bottle Club Clubhouse (307) 250-1458
up to 100 people

Park County Library Grizzly Hall (307) 527-1880
up to 100 people (catering available)

Park County Building (307) 527-8510
up to 80 people

West Park Hospital (307) 578-2569
up to 70 people

Pan Am Room in old airport (307) 527-9900
up to 40 people (must do catered lunch/dinner)

Powell

Park County Fairgrounds (307) 754-8855

- Heart Mountain Center
up to 697 people seated, 1,495 assembly

- Homesteader Hall
up to 325 people

Powell Chamber of Commerce Boardroom (307) 754-3494
up to 20 people

Powell Library (307) 754-8828
up to 45 people

Northwest College (307) 754-7820 or
(307) 587-3376

- Nelson Performing Art Center up to 450 people
- Yellowstone Building up to 250 people
- Student Center up to 200 people
- Trapper Room up to 60 people
- Technology Center up to 30 people

Meeteetse

Senior Center (307) 868-2622
up to 50 people

The Ferret Den Conservation District Office (307) 868-2484
up to 50 people

Meeteetse Rec District (307) 868-2603
up to 50 people

THEATRE TYPE SPACES

Cody

Wynona Thompson Auditorium (307) 587-4251
(Cody High School) up to 1000 people

Cody Theatre (307) 272-7855
up to 300 people

Coe Auditorium (307) 578-4000
(Center of the West) up to 150 people

Powell

Powell High School Auditorium (307) 754-2215
up to 1050 people

Washington Outdoor Theatre (307) 754-5106
up to 200 people

NWC Fagerberg Lecture Hall (307) 754-7820 or
(307) 587-3376

RESTAURANTS WITH PRIVATE MEETING SPACE

Cody

Irma Hotel (307) 587-4221
up to 200 people (if entire restaurant is reserved)

up to 30 (Governor's Room)

Pahaska Teepee Resort (307) 527-7701
up to 200 people

Stampede Bar & Grill (307) 587-5688
up to 140 people

Yellowstone Valley Inn (307) 587-3961
up to 100 people

8th Street at the Ivy (307) 587-2572
up to 50 people

Cassie's Supper Club (307) 527-5500
up to 40 people

Powell

Powell Golf Country Club (307) 754-7259
up to 80 people

The Lamplighter Inn (307) 754-2226
up to 50 people

El Tapatio (307) 754-8085
up to 40 people

Meeteetse

Elkhorn (307) 868-9245
up to 50 people

Outlaw Parlor/Cowboy Bar (307) 868-2585
up to 25 people

MEETING FACILITIES cont.

LODGING PROPERTIES WITH MEETING SPACES

Cody

Holiday Inn <i>up to 350 people (2 separate rooms) (catering available)</i>	(307) 587-3654
Double Diamond X Ranch <i>up to 300 people</i>	(307) 587-5252
Pahaska Tepee Resort <i>up to 200 people (dining available)</i>	(307) 527-7701
Yellowstone Valley Inn <i>up to 100 people (dining available)</i>	(307) 587-3961
The Cody Hotel <i>up to 75 people</i>	(307) 587-5915
Monster Lake Ranch <i>up to 50 people (dining available)</i>	(307) 587-5960
Wapiti Lodge <i>up to 50 people</i>	(307) 587-2420
Best Western Premier Ivy Inn <i>up to 50 people (dining available)</i>	(307) 587-2572
Rimrock Ranch <i>up to 45 people (dining available)</i>	(307) 587-3970
Hunter Peak Ranch <i>up to 40 people (dining available)</i>	(307) 587-3711
Cody Legacy Inn <i>up to 40 people</i>	(307) 587-6067
Bill Cody Ranch <i>up to 40 people (dining available)</i>	(307) 587-2097
Blackwater Creek Ranch <i>up to 38 people (dining available)</i>	(307) 587-5201
7D Ranch <i>up to 30 people (dining available)</i>	(307) 587-9885
Absaroka Mountain Lodge <i>up to 30 people (dining available)</i>	(307) 587-3963
Chamberlin Inn <i>up to 30 people</i>	(307) 587-0202
Creekside Lodge at Yellowstone <i>up to 30 people</i>	(307) 587-9795
Irma Hotel Governor's Room <i>up to 30 people (catering available)</i>	(307) 587-4221
K3 Guest Ranch <i>up to 30 people (dining available)</i>	(307) 587-2080
Crossed Sabres Ranch <i>up to 30 people (dining available)</i>	(307) 587-3750
K Bar Z Guest Ranch <i>up to 30 people (dining available)</i>	(307) 587-4410
Trail Shop <i>up to 40 people (dining available)</i>	(307) 587-3741
Shoshone Lodge <i>up to 25 people (dining available)</i>	(307) 587-4044
Elephant Head Lodge <i>up to 25 people (dining available)</i>	(307) 587-3980
Clark's Fork Guest Ranch <i>up to 24 people</i>	(707) 838-3027
Bull Moose Retreat <i>up to 15 people</i>	(307) 586-9229

PUBLIC SPACES

Cody

The City of Cody has more than 20 developed parks offering amenities for groups of all sizes. Please contact the Parks Department (307) 587-0400 for further information.

Powell

Park County Fairgrounds	(307) 754-5421
Plaza Diane <i>(outdoor area with stage)</i>	(307) 754-6039

Meeteetse

Oasis Motel <i>(outdoor by the river)</i>	(307) 868-2551
--	----------------

PRIVATE CLUBS WITH MEETING SPACE

Cody

Eagles Lodge <i>up to 300 people</i>	(307) 527-7356
Elks Lodge <i>up to 150 people</i>	(307) 587-3296
VFW <i>up to 180 people (catering available)</i>	(307) 587-3671

Powell

American Legion <i>up to 150 people</i>	(307) 754-3411
Eagles Lodge <i>up to 200 people</i>	(307) 754-4242
Elks Lodge <i>up to 125 people</i>	(307) 754-2995
VFW <i>up to 200 people</i>	(307) 754-9241

MOUNTAIN LOCATION MEETING SPACE

Northwest College Michelson Field Station <i>up to 70 people</i>	(307) 754-6219
Shreve Lodge (Buffalo Bill Reservoir) <i>up to 150 people</i>	(307) 587-9227
Mammoth Hot Springs Hotel (Yellowstone) <i>(meetings only)</i>	(307) 344-7311

CATERING

Cody

Roadgrill Catering	(307) 899-5755
Bubba's Barbeque	(307) 587-7427
Holiday Inn	(307) 587-3654
Irma Hotel	(307) 587-4221
Center of the West	(307) 578-4000

Powell

Catering with Joy	(307) 254-2836
Chartwells Catering	(307) 754-6013
Claudette Stroh	(307) 272-1667
Taste & See Catering	(760) 900-9538

CODY AUDITORIUM & CODY CLUB ROOM

**1240 Beck Avenue
Cody, WY 82414
(307) 527-5363**



Arena Dimensions: Main Hall 65' x 87'
5,655 sq. ft.

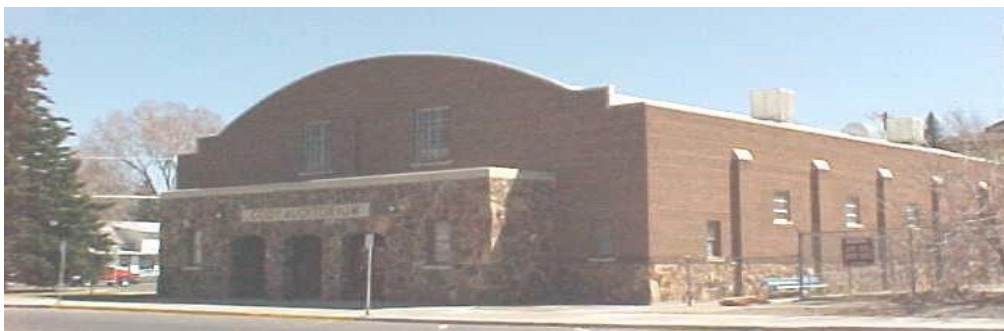
Club Room 45'x35'
1,575 sq. ft.

Arena Capacity: Main Hall - 320
Club Room—130

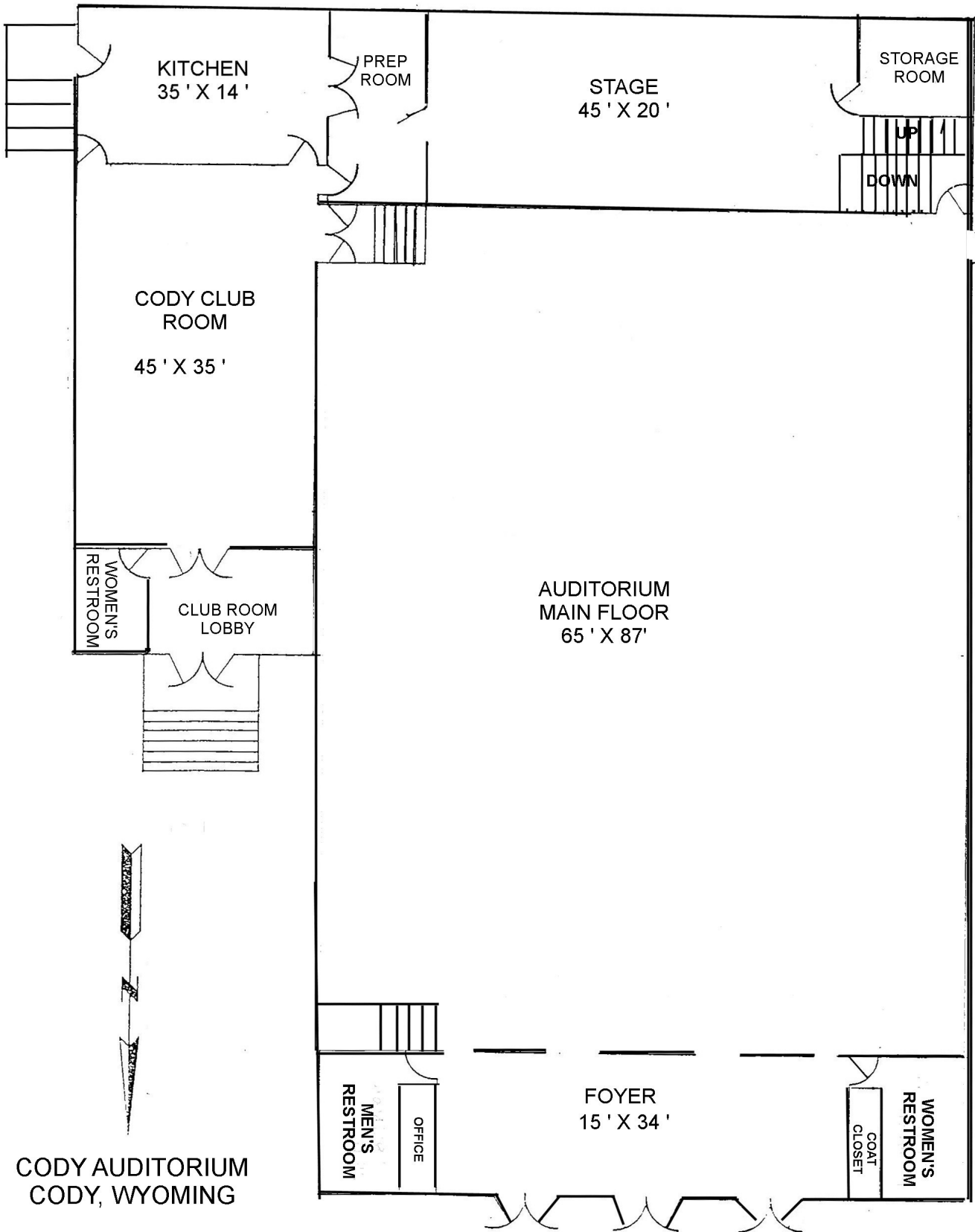
Food Service: Large Catering Kitchen

**Convention Booth
Equipment:** Pipe and Drape available

Other: Table and chair rental through City of Cody
(must reserve in advance)



CODY AUDITORIUM



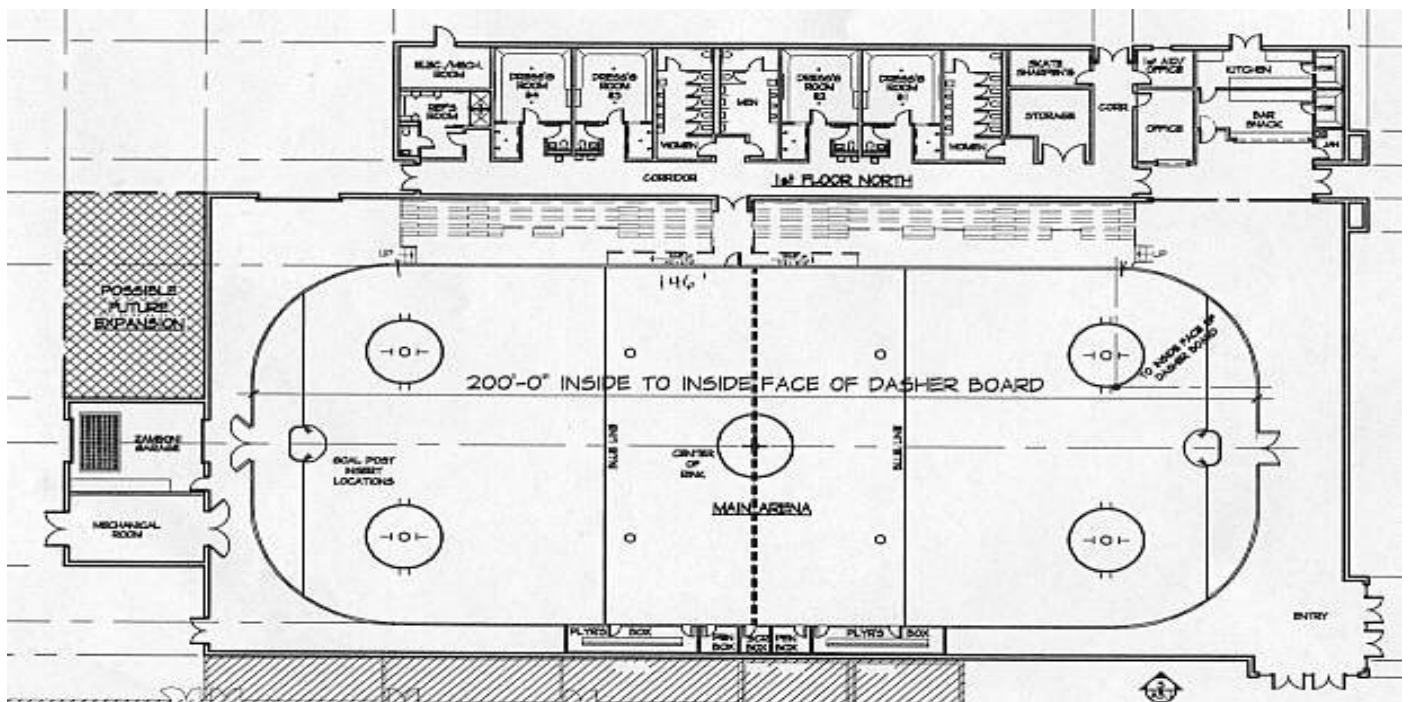
CODY AUDITORIUM
CODY, WYOMING

VICTOR J. RILEY ARENA & EVENTS CENTER

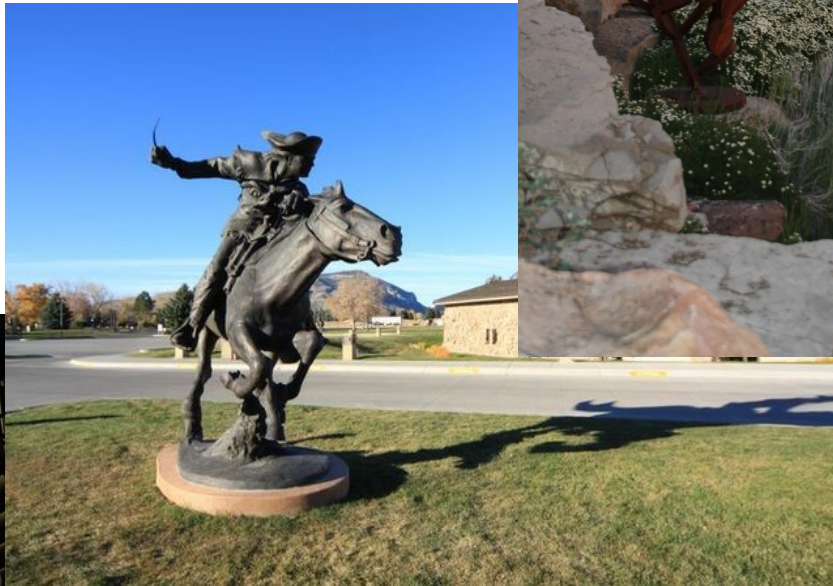
1400 Heart Mountain Street
 P.O. Box 1902
 Cody, WY 82414
 307-587-1681
 Website: www.codyicearena.com



- Arena Dimensions: Main Hall 25,256 sq. ft., 106' W—224' L—32" H
- Arena Capacity: 1,725 occupants as an events center
- Food Service: Full Service Concession Stand, small Catering Kitchen
- Convention Booth Equipment: Pipe & Drape available for 75-100 trades show booths
- Other: Table & Chair rental through City of Cody (must reserve in advance)
 Sound System, small office, 4 locker rooms equipped with showers
- Exhibit Space: 25,000 square feet; accommodates approximately 100 10'x10' booths.
- Electric Service: Available in most locations, upon request.
- Service Accesses: Sliding break-away doors on north side of building; 8 convention doors for public access: 16'x16' over-head door for loading.



BUFFALO BILL CENTER OF THE WEST



BUFFALO BILL CENTER OF THE WEST

720 Sheridan Avenue Cody, WY 82414 Phone (307) 578-4000 www.centerofthewest.org

FACILITY	USE	MAXIMUM OCCUPANCY
Boardroom	Meeting room – traditional “boardroom” style	Seats 25 around boardroom table – other chairs <u>not</u> around table can be setup (approx. 40 total)
Adult Classrooms	Meeting rooms – tables and chairs in classroom style that can be moved around	Seating maximum 40
Draper Natural History Museum Photography Gallery	Dinner and reception space	Dinner – 150 maximum Reception – 300 maximum
Draper Natural History Museum Lower Gallery	Dinner and reception space	Dinner – 150 maximum Reception – 200 maximum
Cody Firearms Museum Breezeway – with Sharp Garden access in summer	Dinner and reception space	Dinner - 150 maximum Reception - 300 maximum
Braun/Greever Gardens	Outdoor dinner and reception space	Dinner – 150 maximum Reception – 300 maximum
Coe Auditorium	Theater seating	Seating maximum 150
Robbie Powwow Garden	Outdoor stage/ amphitheater and restrooms available	Maximum capacity approx. 700 people
Kuyper Dining Pavilion	Indoor/outdoor dinner and reception space	150-200 maximum

HOLIDAY INN CONVENTION CENTER

1701 Sheridan Ave.
P O Box 30
Cody, WY 82414
Toll-Free: 1-800-527-5544
Tel: 1-307-587-5555
Fax: 1-307-527-7757
Email: blair@blairhotels.com
Website: www.blairhotels.com



The Buffalo Bill Village Resort, Cody's only downtown full service complex, offers three hotels totaling 350 rooms; conference facilities with breakdown ability, totaling 9,245 square feet with the ability to handle groups of 15 to 350; three restaurants, swimming, and activities such as white water and scenic river rafting, horseback riding, and day tours of Yellowstone National Park.

They welcome site inspections and the opportunity to introduce you to their certified conference staff.

Room name	Sq. Ft.	Dimensions	Ceiling	Reception	Banquet	Theatre	Classroom
Ballroom	2,750	55'x50'	10'	500	350	400	200
Bob Cat	950	19'x50'	10'	150	75	100	50
Hoo Doo, Two Dot (each)	900	18'x50'	10'	150	75	100	50
Pitchfork, T E Ranch	450	18'x25'	10'	75	40	50	25
Taggarts	2,775	75'x37'	11'	450	300	350	75
1.2.3	925	37'x25'	11'	125	80	80	40
Bandana	2,100	70'x30'	10'	125	80	150	75
Breezeway	1,800	90'x20'	11'	100	-	-	-

HOLIDAY INN CONVENTION CENTER

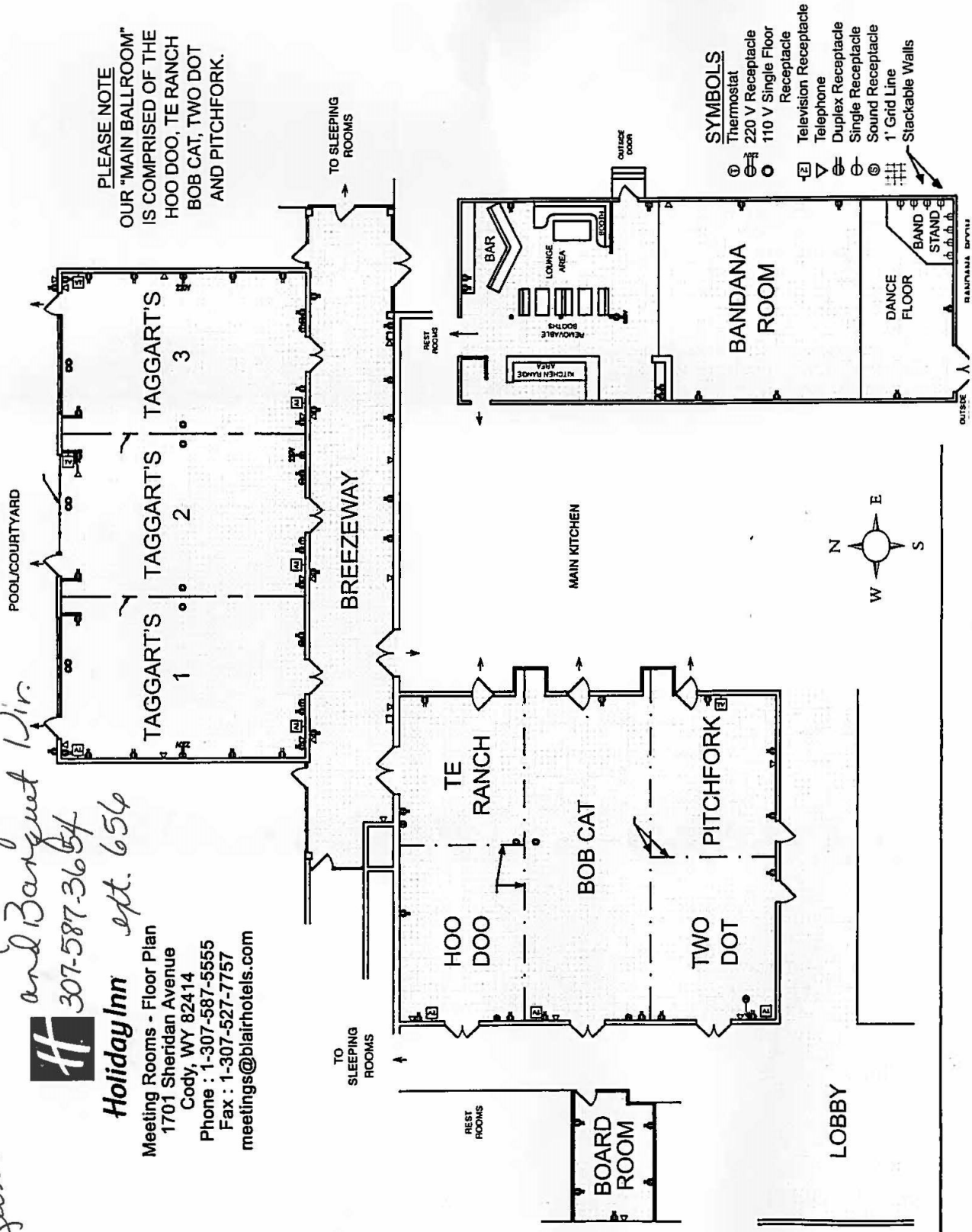
Lena Wilson - Meetings and Banquet Dir.



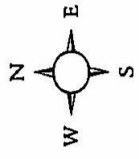
Holiday Inn apt. 656
 307-587-3654

Meeting Rooms - Floor Plan
 1701 Sheridan Avenue
 Cody, WY 82414
 Phone : 1-307-587-5555
 Fax : 1-307-527-7757
 meetings@blairhotels.com

PLEASE NOTE
 OUR "MAIN BALLROOM"
 IS COMPRISED OF THE
 HOO DOO, TE RANCH
 BOB CAT, TWO DOT
 AND PITCHFORK.



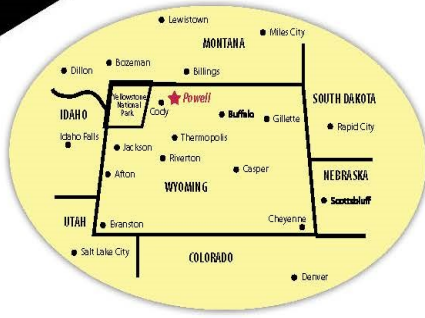
- SYMBOLS**
- ⊖ Thermostat
 - ⊖ 220 V Receptacle
 - ⊖ 110 V Single Floor Receptacle
 - ⊖ Television Receptacle
 - ⊖ Telephone
 - ⊖ Duplex Receptacle
 - ⊖ Single Receptacle
 - ⊖ Sound Receptacle
 - ⊖ 1' Grid Line
 - ⊖ Stackable Walls



NORTHWEST COLLEGE



- ← 26
- ← 27
- ← 28
- ← 29
- ← 30



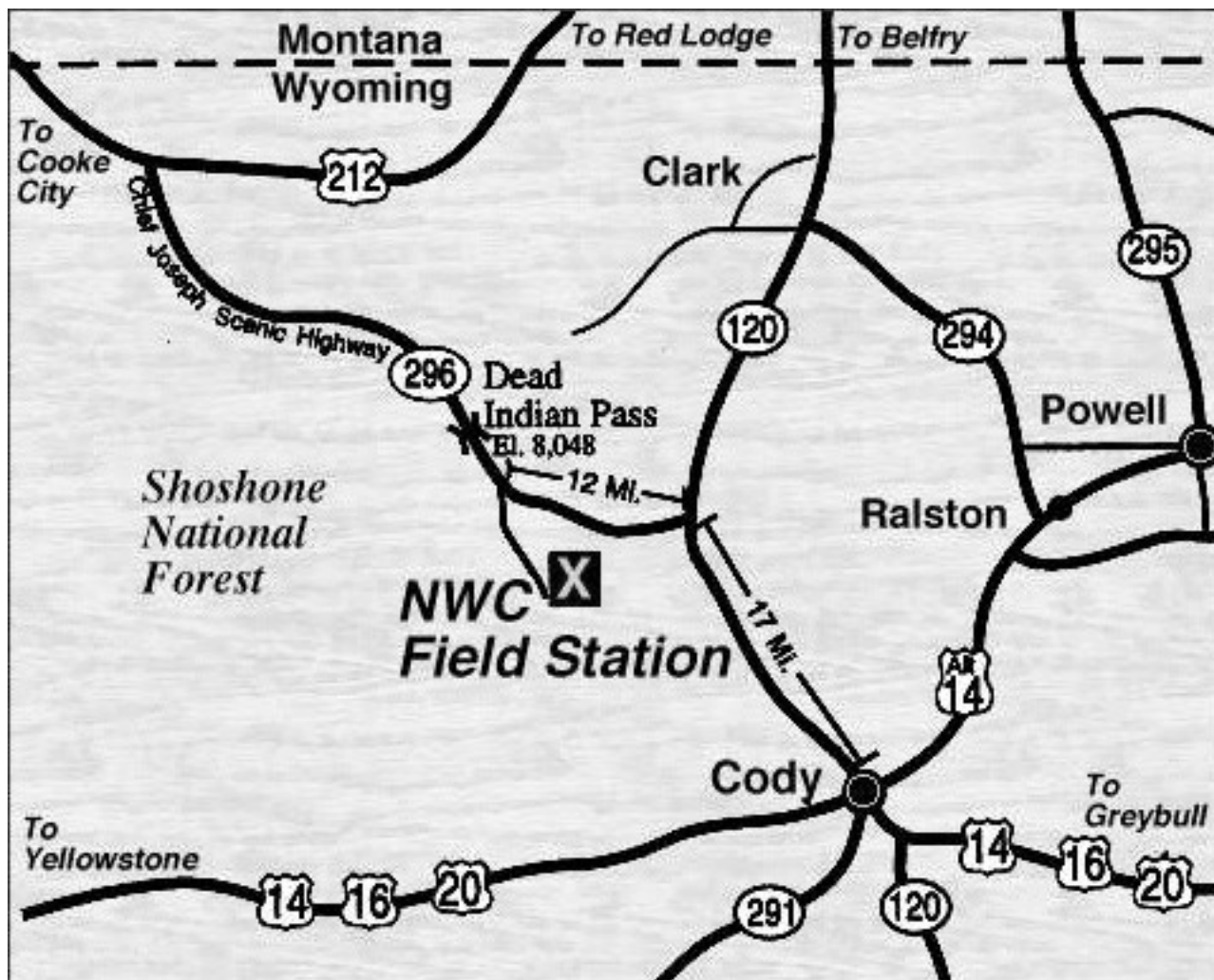
NWC IS AN EOI

- | | |
|--|--|
| <ul style="list-style-type: none"> 1 Frisby Building — FRS 2 Colter Hall / Student Success Center — CH 3 Nelson Performing Arts Center — NPA 4 Orendorff Building — ORB
<i>Admissions, Cashier, Financial Aid & Scholarships, Registration & Records, GEAR UP Program</i> 5 Moyer Building — MB 6 Johnson Fitness Center — JFC 7 Hinckley Library — HL 8 Science and Mathematics Building — SM 9 DeWitt Student Center / Trapper Room — DSC
<i>Bookstore, Residence & Campus Life, dining facilities</i> 10 Fagerberg Building / Greenhouse — FAB 11 Children's Learning and Care Center — CLCC 12 Nursing Building — NU 13 Oliver Building — OLB 14 Lewis and Clark Hall — LC 15 Cabre Building — CB 16 Vehicle Maintenance | <ul style="list-style-type: none"> 17 Cody Hall — CODH 18 Simpson Hall — SH 19 Ashley Hall — ASH 20 Trapper Village Main Apartments — TV 21 Stock Agriculture Pavilion — SAP
<i>(Approximate distance 1.5 miles north)</i> 22 Observatory 23 Equine Center — EC 24 Physical Plant — PP 25 Trapper Field 26 West Campus
<i>Center for Training and Development — CTD
Workforce Development, Adult Education
Trapper Village West Apartments — TVW
Powell Valley Community Education
Student Senate Field</i> 27 NWC Cody Center — CC 28 Mickelson Field Station — MFS 29 NWC Worland Center — WC 30 Trapper Arena |
|--|--|

NORTHWEST COLLEGE FIELD STATION

The Northwest College A.L. Michelson Field Station

The Northwest College A.L. Mickelson Field Station is a comfortable and attractive mountain retreat on approximately 36 acres of wilderness. Surrounded by Shoshone National Forest, it is a rugged countryside, full of plant and animal life. The facility is winterized for year-round use. Just 55 miles from the northeast gate of Yellowstone Park, 50 miles from Northwest College campus and 30 miles from Cody, Wyoming, our field station provides a unique learning environment for Northwest College students, faculty, staff, and service area residents. It is also available to serve users who are not associated with Northwest College but who have distinct and legitimate educational, cultural or recreational purposes which do not conflict with the natural and historic learning environment.



PARK COUNTY

Events

Heart Mountain Center



Located at the Park County Fairgrounds, the Heart Mountain Center is a multi-purpose building that features a certified commercial kitchen, outdoor canopy and two conference rooms which can be converted into one large space. The hall is 68 x 155 (10,540 square feet) and holds 697 seated or 1495 assembly. Rental of the hall includes 8' rectangular tables and 72" round tables and metal chairs. Also available are a sound system, stage, podium, projector, roasters and coffee pots.



Park County Fairgrounds
655 East 5th Street
Powell, WY 82435
(307) 754-8855

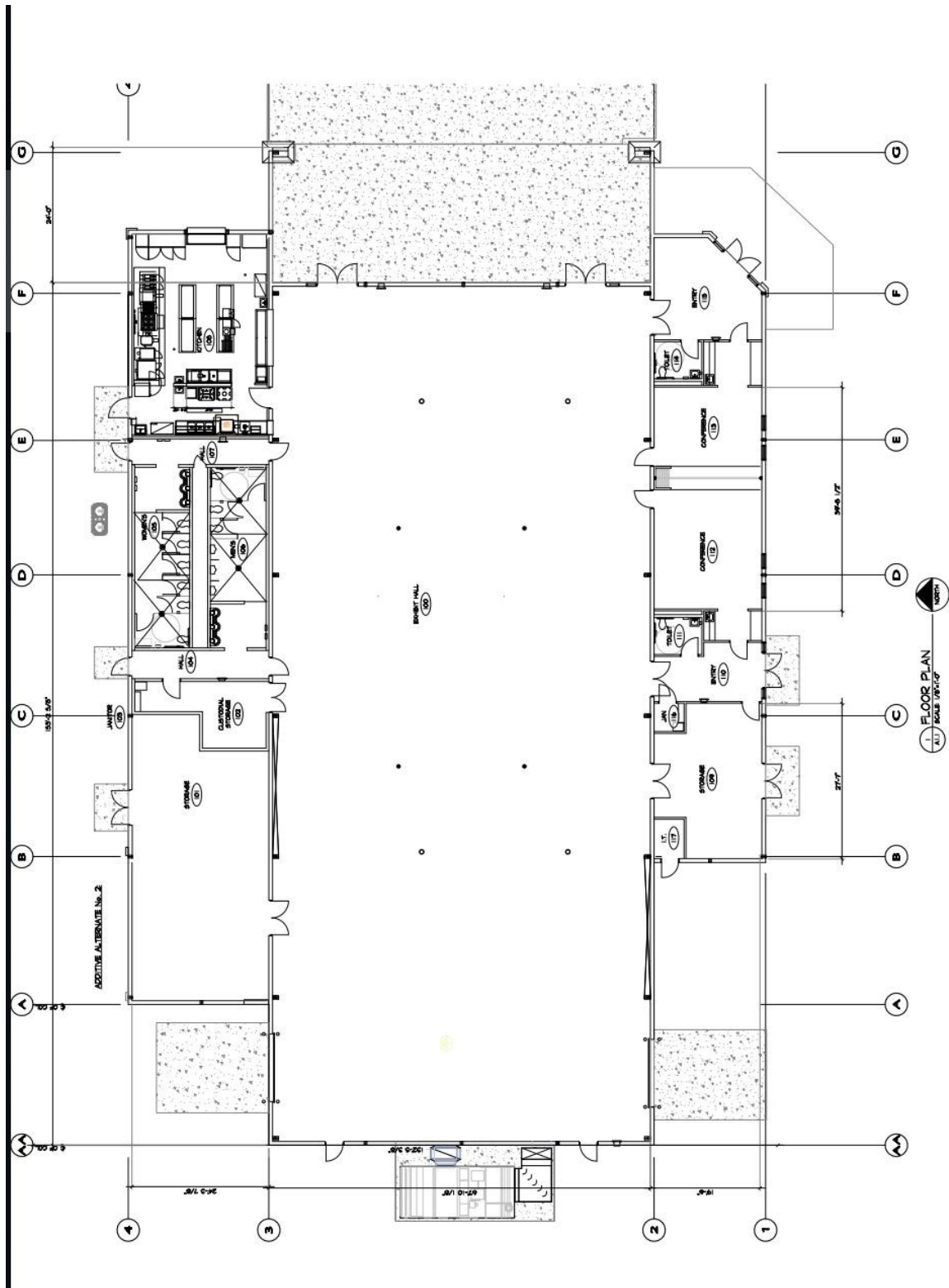
www.parkcountyeventswy.com



PARK COUNTY



Heart Mountain Center



PARK COUNTY *Events*

Homesteader Hall



The Homesteader Hall is 49 x 99 feet (4,851 square feet) that holds 325 people seated. Rental includes 8' rectangular tables and metal chair as well as the kitchen. Sound system, stage, podium, projector, roasters and coffee pots are available for use free with the rental.

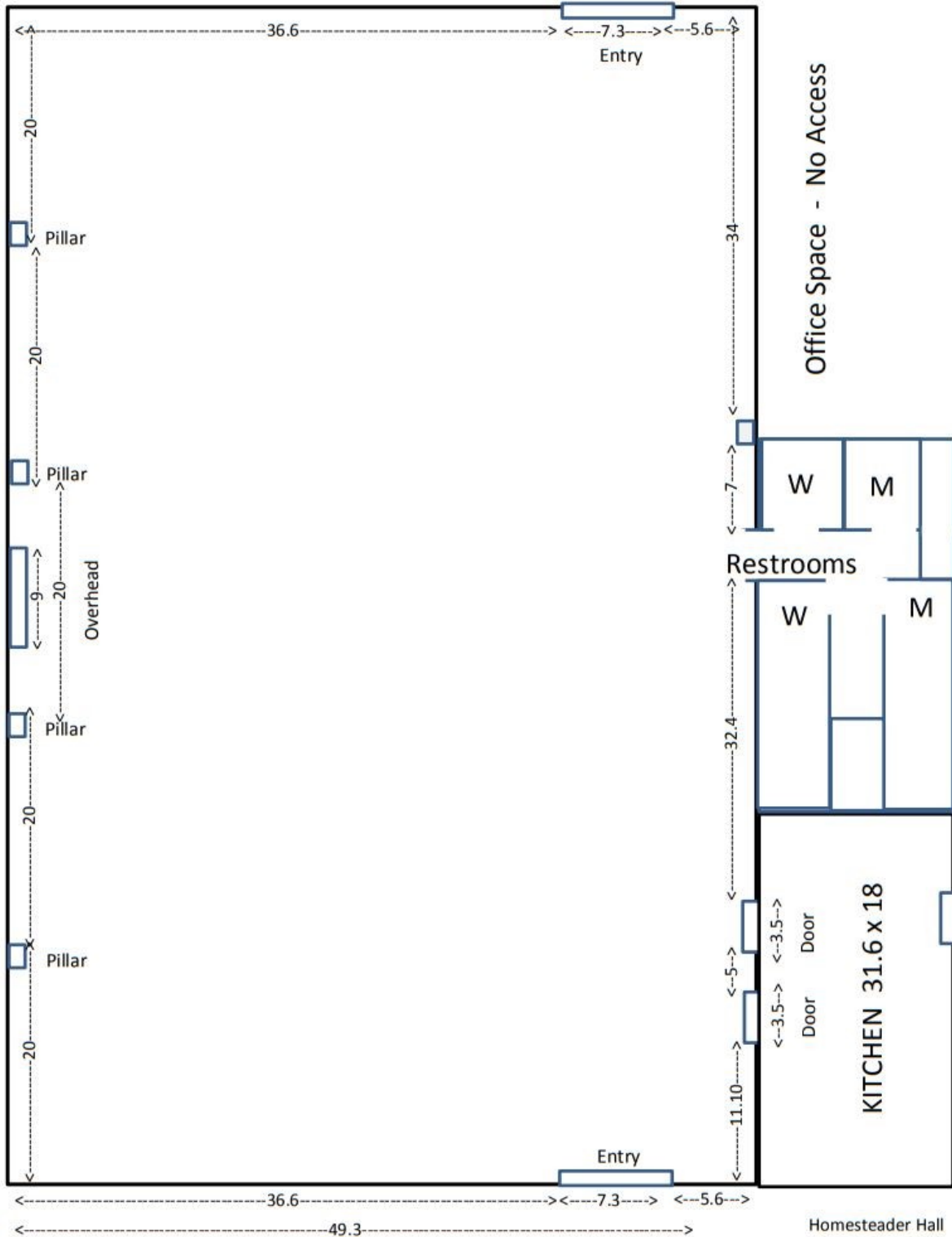
Park County Fairgrounds
655 East 5th Street
Powell, WY 82435
(307) 754-8855
www.parkcountyeventswy.com



PARK COUNTY

Events

Homesteader Hall



PARK COUNTY

Events



Camping at Park County Fairgrounds

