

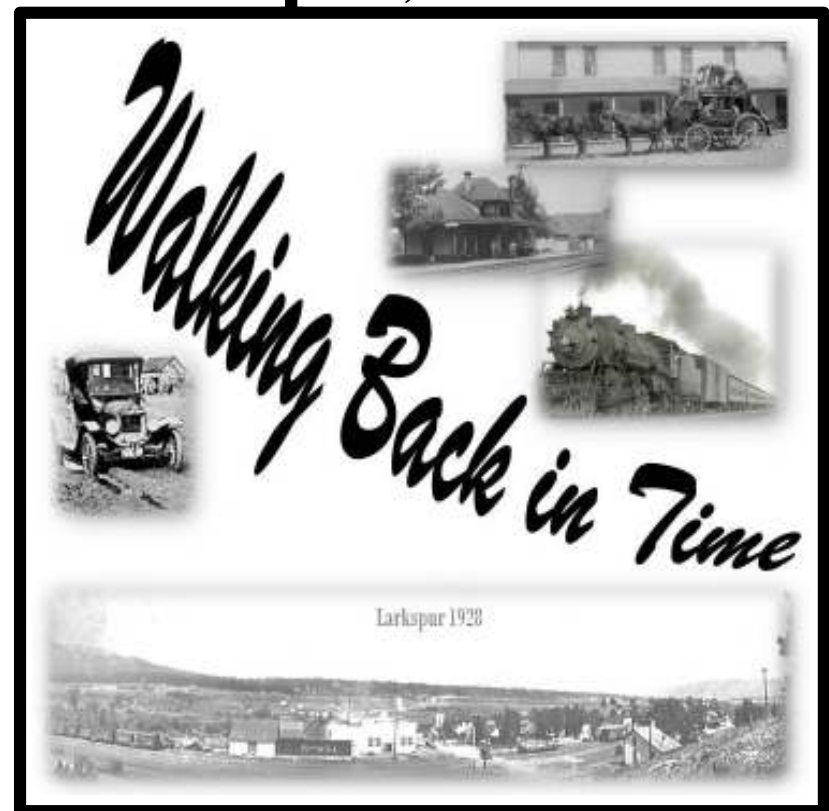
Walking Back in Time

Historic Larkspur, Colorado

Designed, Written and Published
by
Larkspur Historical Society
Larkspur, Colorado
Published 2016



Historic Larkspur, Colorado



Visit us at

<http://www.larkspurhistoricalsociety.org>

Larkspur Historical Society

A 501(c)3 Non-profit Organization Registered in the State of Colorado 1990

Account Number 98-09352

Sponsors



Business Name

Address
Address 2
Telephone
Email



Business Name

Address
Address 2
Telephone
Email



Business Name

Address
Address 2
Telephone
Email



Business Name

Address
Address 2
Telephone
Email



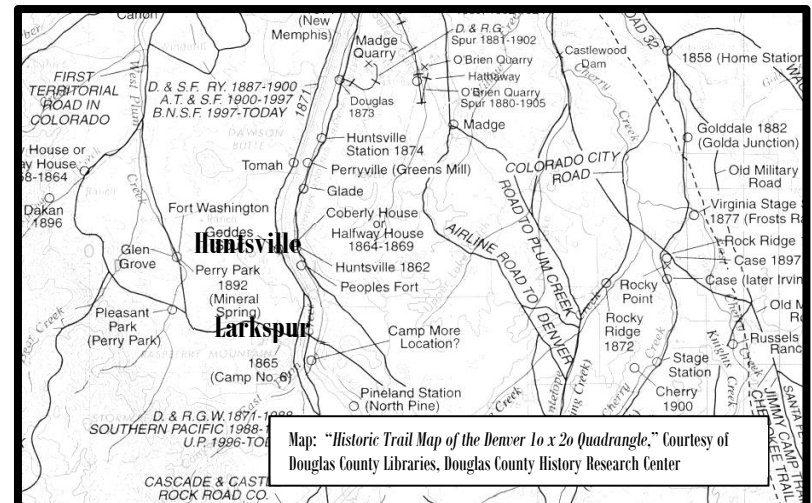
Business Name

Address
Address 2
Telephone
Email

Larkspur, Colorado

...a town with a pioneering past, a vibrant present and an exciting future.

Larkspur was founded in 1869 out of the old community of Huntsville, located at the time one mile north of the present day town. Huntsville was a stage stop approximately halfway between Denver City and Colorado City (today's Colorado Springs). Huntsville sported about fifteen structures including a halfway house, community fort and sawmill. Thirteen families lived in and the surrounding area of Huntsville. The Denver & Rio Grande Railroad came to southern Douglas County in September, 1871. and shortly thereafter started carrying both passengers and mail. Huntsville with its stage stop and post office faded. Larkspur was founded in 1869 and became the center of commerce in southern Douglas County. Larkspur grew quickly during the latter part of the nineteenth century. Commercially, Larkspur flourished with multiple mercantile stores, feed and grain stores, hotels and eateries, blacksmiths, butcher, barber shop, pool hall, confectionery and, for a while, Larkspur had a two sawmills and a large creamery and milk drying plant. Larkspur had a school and a chapel and was known as "*the dancing town*" in eastern Colorado. In 1915, Larkspur even had its own baseball team, the *Larkspur Giants*. Larkspur became the world headquarters for the American Federation of Human Rights in 1916. The 1965, the Flood of the Century hit Larkspur hard removing the creamery, the chapel and destroying a large portion of the town structure. Larkspur has recovered to a degree with its commercial growth and the addition of the Colorado Renaissance in 1976 really boosted the community. Larkspur was incorporated in 1974 and the last official census (2013) reported the Town of Larkspur at a population of 193. This booklet identifies structures and times of Larkspur's historic past.



About Larkspur Historical Society

Mission: The Larkspur Historical Society is dedicated to the discovery, preservation, interpretation, exhibition, and education of the rich heritage of Southern Douglas County, Colorado, including the historic communities in the area. Larkspur Historical Society's goal is to act in co-operation with public and private entities to promote awareness of and interest in the historic development of the Southern Douglas County area.

The Larkspur historical Society was incorporated on April 2, 1990 and has continued to be an actively engaged Society throughout southern Douglas County. The geographical area, whose history and cultures the Society stewards, covers the portion of Douglas County known as *Divide Country*, inclusive of the pioneering communities of Huntsville, Glen Grove, Perry Park Ranch, the Stone Canyon and Spruce Mountain areas, Greenland, Lake Gulch, Spring Valley and the Town of Larkspur.

The Society is multi-faceted, focusing on restoration and preservation projects, public and elementary education, and landmarking of historical properties and structures. The Society works closely with Douglas County on preservation of historic, County-owned properties and on the County's sanctioned historic landmarking program. The Crull/Hammond Cabin restoration and the restoration of the Greenland Post Office currently underway are examples of the Society's participation in structure preservation.

The Society sponsors a wide variety of educational platforms and projects, including its excellent website providing extensive historical information on people, communities and ranches of the area and the provision of tours, quarterly programs open to the public and events such as open houses at historic structures at historic venues such as the Greenland School and walking and historical character re-enactment at the Spring Valley Cemetery, Larkspur Elementary School and the Town of Larkspur.

The Society works closely with the Douglas County History Research Center arm of the Douglas County Libraries as well as the Douglas County Open Space and Natural Resources and the Douglas County Preservation Board. Larkspur Historical Society provides booth manning and historic information at the annual Douglas County Fair. The Society is also an active member of the Eastern Colorado Historical Societies and Museums group that encompasses the geography of the 1861 Territorial Douglas County.

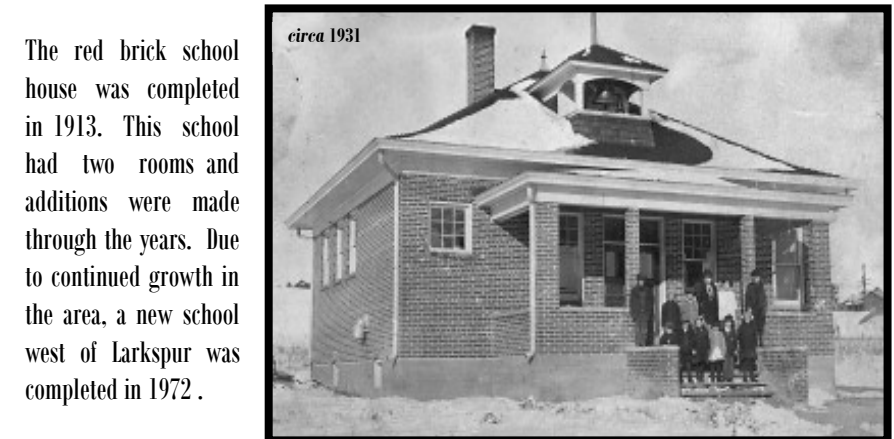
The Larkspur Historical Society meets monthly, with the exception of the month of December, on every second Friday of each month, 10:00 AM at the main conference room of the Larkspur Fire House at 9414 S. Spruce Mountain Road, Larkspur, Colorado 80118. Please come and join us.

<http://www.larkspurhistoricalsociety.org>

Larkspur Elementary Schools



In 1872, School District 15 was established on the Carr Lamb Ranch south and west of Larkspur. The building was moved into Larkspur and destroyed by a "cyclone" in 1912.



The red brick school house was completed in 1913. This school had two rooms and additions were made through the years. Due to continued growth in the area, a new school west of Larkspur was completed in 1972.



The red brick building became the Larkspur Post Office in 2004, following several business ventures.

Denver and Rio Grande and Atchison, Topeka & Santa Fe Depots

The Denver & Rio Grande Railroad (D&RG) reached Larkspur in 1871, changing the lives of settlers living in the Divide Country of southern Douglas County. During the early period of railroads in



Douglas County, the Atchison, Topeka & the Santa Fe shared tracks with the D&RG. A post office was moved to the D&RG Depot in late 1871 from Huntsville as the mail transferred from being carried by stage to the more efficient railroad. The disposition of the D&RG Depot remains a mystery today.



In 1887, the AT&SF built their own tracks. The original Santa Fe depot was a box car. In 1905, a depot from Taylor's on the Cañon

City Line moved to replace the box car. The Santa Fe Depot was retired and moved to Palmer Lake.

1960

JA Cattle Company established northeast of Larkspur. _Population of Douglas County is 4,816.

1962

Carlson Frink Creamery closes.

1964

Larkspur volunteer fire department formed.

1965

Flood causes major destruction in Douglas County and Denver. The flood started as a cloudburst near Larkspur, and spread northward along Plum and Cherry Creeks. Frink Creamery and Larkspur Chapel washed away by flood.

1967

Perry Park is sold to Colorado Western Development Company.

1970

Colorado Western Development places a sales office NE of Larkspur. Space Ship in appearance building is visible from I-25. Population of Douglas County reaches 8,608.

1972

Colorado Western Development of Perry Park establishes a sales office north of Larkspur.

1974

Larkspur Fire Protection District created.

1976

Colorado Renaissance Festival comes to Larkspur.

1979

Home rule established in Larkspur. Ann Trueblood is elected the first mayor.

1980

Population of Douglas County is 25,153.

1984

Plum Creek Winery established in Larkspur near present-day Fire Station; relocates to Palisade, CO in 1989.

1987

Population of Larkspur is 300, due to the Flag Pole annexation of 2,500 acres south of town (spruce mountain developers); de-annexed in 1996.

1990

Population of Douglas County is 61,670.

1995

Establishment of the Larkspur Community Park.

2000

Population of Douglas County is 175,766; Larkspur 234.

2010

Population of Douglas County is 285,465; Larkspur 186.

2013

Grand Opening of the newly improved Larkspur Community Park. Population of Douglas County is 305,963.

Wilkrest Boarding House



Built in 1922 by Ann Wilkens and served as a boarding house for railroad personnel. Larkspur had ten to twelve trains passing through daily. The house is currently the home of the Town of Larkspur's mayor.



Larkspur Area Timeline

64,000,000 B.C.E. (Cenozoic Era)

The area around the Front Range is a Rainforest, receiving up to 100 inches of rain per year. Current precipitation rates average around 19 inches.

5500-1300 B.C.E.

Paleo-Indians, or People of the Middle Archaic Period, occupy the area, hunting and traveling across the Front Range.

Prior to 1500 C.E.

Indigenous Peoples, also referred to as Plains Apache Tribes, inhabit the area and establish families stretching across the high plains area of the Rockies.

1500 – 1600 C.E.

Ute Tribes begin migrating into the Rocky Mountain Region of Colorado, including Western Douglas County, which drives the Plains Apache Tribes in a southward direction.

1820

Major Stephen Long leads the first government-sponsored survey of the American West. The Long party's account was among the first descriptions of the area that would become Colorado. The group entered Douglas County near where the South Platte River flows from the mountains, and exited near Palmer Lake.

1841

First covered wagons with pioneers start entering the Larkspur-Huntsville area.

1859

Sarah Coberly established Coberly Halfway House.

1860

Hunsville Post Office established.

1871

Denver & Rio Grande Railroad reaches site of Larkspur.

Town of Huntsville moved to Larkspur. The name Larkspur was chosen by Governor Hunt's wife, Elizabeth.

1872

Missouri industrialist and railroad owner John D. Perry purchases several homesteads to make a ranch at "Pleasant" Park.

1876

Colorado becomes a state.

1888

John Perry and Bela Hughes form Red Stone Town, Land and Mining Company, they begin plans to construct a resort community at Perry Park.

1890

Postal telegraph poles erected.

Population of Larkspur is 50.

1896

Larkspur Creamery established and operated by Richard Fosdick.

1900

Dan Whitehead opens a general store. The Larkspur General Store is still in operation in 2015 on the SW corner of Perry Park and Spruce Mountain Roads.

Population of Douglas County is 3,120; Larkspur 182.

1901

Telephone service comes to Larkspur; pay station phone in Dan Whitehead's store.

1902

Larkspur School closed for almost two months due to scarlet fever, and later in the year closed again due to diphtheria outbreak in the area.

The Carlson Frink Creamery began; Clarence B. Frink, Carlson, and Reid purchased the separator station from H.M. DeWitt.

1910

Population of Larkspur is 201.

1915

Santa Fe trestle over East Plum Creek in the southside of town is built using mules.

1916

American Federation of Human Rights purchases 600 acres of land in Larkspur, and in 1917 announces that National Headquarters is moving to Larkspur.

The Carlson and Frink Creamery Company incorporated and adopted the Carlson Frink Brand.

1920

Shelton and Shelton, Proprietors, run a Ford garage on the NE corner of Perry Park and Spruce Mountain Roads. Several years later, garage is operated by John Hammond, longest serving sheriff of Douglas County. Garage is still in operation. Population of Larkspur is 215.

1925

Highway 85 comes through Larkspur.

1928

E. V. McCulloch begins operation of the Fox Farm, south of Larkspur proper. Operates until 1952 when fashions change.

1940

Atchison, Topeka & Santa Fe station closed.

Population of Larkspur is 283.

1942

The Larkspur Café opens on west side of Spruce Mountain Road in a private residence. It is well-known all over Douglas County for its 3.2 beer and burgers. The Spur of the Moment is still in operation in 2015 in a new building just south of the demolished original.

1950

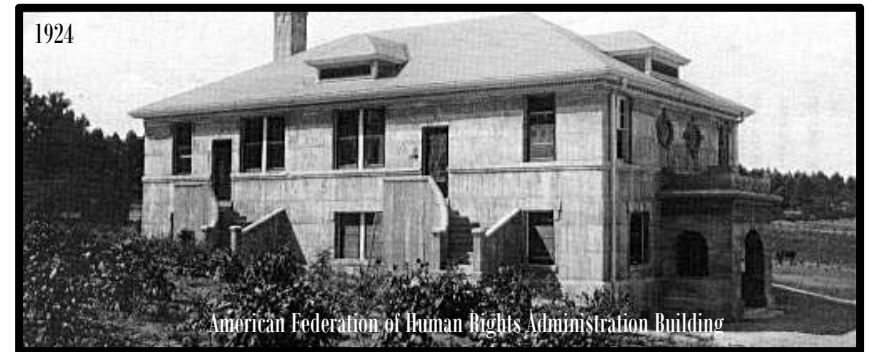
Population of Larkspur is 234.

1954

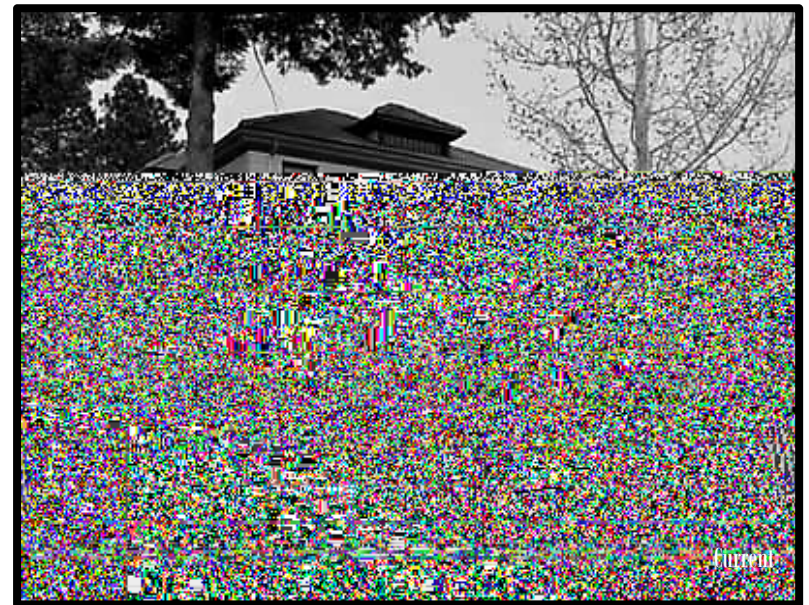
Denver & Rio Grande station in Larkspur permanently closed.

Atchison, Topeka & Santa Fe Depot retired and moved to Palmer Lake.

American Federation of Human Rights



The American Federation Of Human Rights, a Co-Masonic Fraternal Order, incorporated in 1916 and purchased 600 acres in Larkspur to serve as its international headquarters. This building was built in 1918 with materials found on the property and serves as the focal point for the compound. The mission of the organization was to demand equal rights for both sexes, better working conditions and to combat ignorance. Since many of its members engaged in coal mining, the compound doubled as a retirement place for miners with lung disease and it also served as a home for orphans and widows. The building was placed on the National Register of Historic Places in March of 1998.



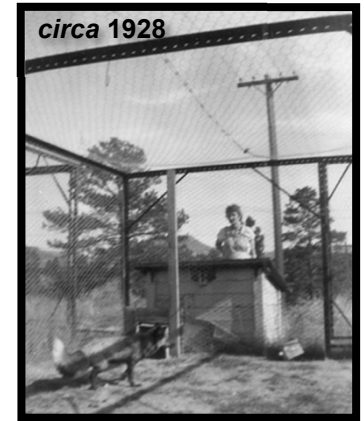
Larkspur Chapel

Another structural victim of the 1965 Flood was the Larkspur Chapel, a non-denominational church and housed services, socials and group organizations such as the Larkspur Larks. The Chapel, was located where the current Larkspur Fire House is located.



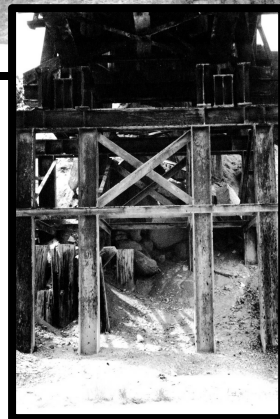
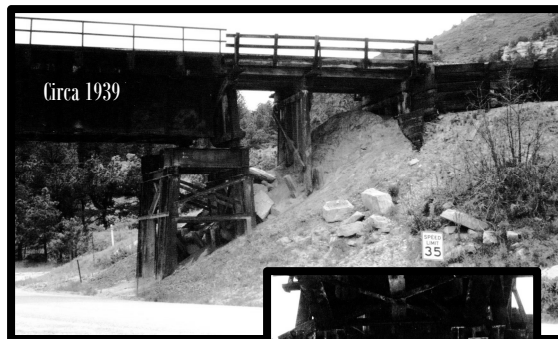
Lincoln Fox Farm

The Lincoln Fur Farm, which began operations in 1928 with E.V. McCullough proprietor, was located near Larkspur on Fox Farm Road. Cages for the fox were barrels buried in the ground and eventually included one hundred enclosures. High fences were constructed on the perimeter of the property to prevent road noise and unlawful entry. The Lincoln Fur Farm closed shortly after WWII.



Santa Fe Trestle

The Santa Fe Railroad was completed in 1887 and the heavy construction work of the trestle done with the use of mules around the turn of the twentieth century. The flood of 1965 caused heavy damage to the rail bed, tracks and trestle which required a major rebuild of the trestle before it could be used.

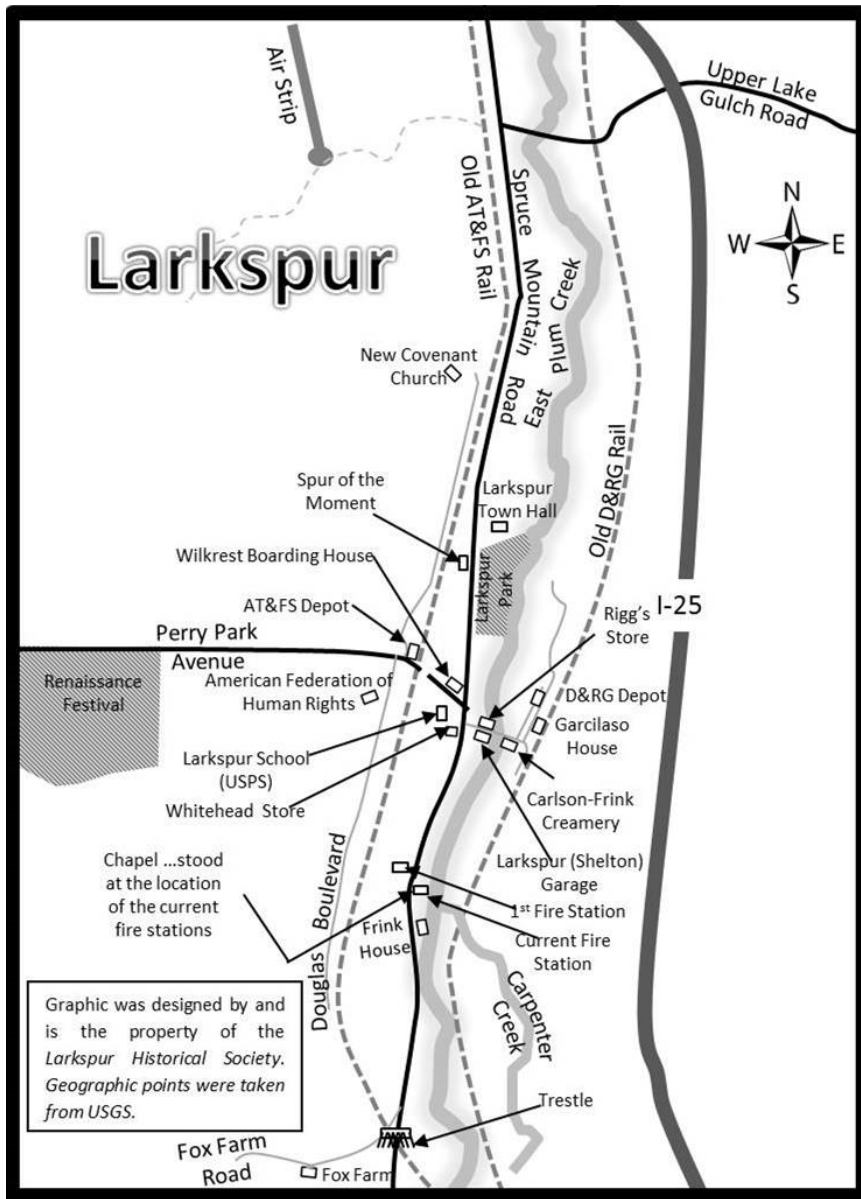


Renaissance Festival

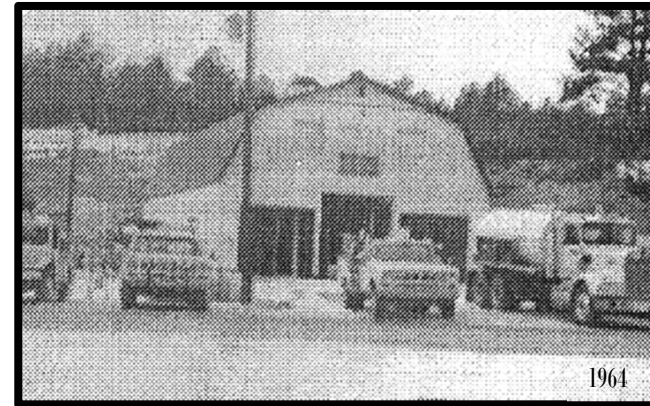


The Renaissance Festival arrived in Larkspur in 1976. Thousands of people attend the June festival each year. The Colorado Renaissance Festival is Colorado's premier summertime event, a thematic recreation of a 16th Century village and marketplace set in the picturesque mountain venue of Larkspurshire.

Graphic of Historical Locations Identified in Booklet



Larkspur Fire Station



The Quonset-style building served as Larkspur first fire house with Stan Trueblood as the first fire chief. The equipment was minimal ...a chemical tank on a cart that had to be pulled by

two or more people and the first fire truck. The latter was a used forestry truck donated from

the City of Fort Collins. The groundbreaking for a new fire station building started in 1965 on the location of the former Larkspur Chapel that had been



washed away by the 1965 Flood. The new, second fire house building was replaced with a major addition to the Larkspur Fire Protection District complex in 2009.



Carlson Frink Creamery



Larkspur's first creamery, owned by Richard Fosdick in 1896, was the main industrial business for Larkspur. Fosdick sold the creamery to H. M. DeWitt in 1901 who resold the facility to Clarence Frink in 1902. Frink incorporated the business and grew it significantly with the large supply of milk from Divide Country many dairy farms. The creamery was well known for its popular Black Canyon cheese. The creamery would use 800 pounds of milk a day and had milk

cans painted half red and half green. Frink was the mainstay of employment for Larkspur and eventually was one of the largest creameries in Colorado. The 1965 flood completely destroyed the creamery.

Larkspur Garage



The Larkspur Garage building still stands at the corner of Spruce Mountain Road and Plum Avenue and has been in operation since 1918 when it was built by the Shelton Brothers and operated as a Ford garage. Blacksmith C. J. Buckner served as the garage mechanic. The Shelton Brothers moved to Castle Rock and the business was later purchased by John Hammond, the longest serving Sheriff of Douglas County.

Frink House



This prairie-style home was built in 1914 and owned at one time by Clarence B. Frink, owner of the Carlson-Frink Creamery. Two mayors of Larkspur have owned this home. The Frink House was officially identified as a Douglas County Landmark in 2009.



Whitehead General Store

Sam Whitehead originally built his general store which has become Larkspur's Corner Market of today. During its operation the store has had many owners: Henry Manhart, the Saare Brothers, Nathan and Josephine Pearman and Ray and Norma Norton who purchased the store in 1947 and operated it the longest as a general store. Today, the building is known as the Corner Market and serves stock items of groceries and dairy products as well as operating as a gasoline filling station and sandwich/pizza deli.



Larkspur Cafe / Spur of the Moment



The Larkspur Cafe was a residence when it was built in 1923. In the 1940's, the home was moved a little north and closer to Spruce Mountain Road and opened as the Larkspur Café. The café served beer and burgers. When a dance floor was added, the name was changed to the Spur Inn. 3.2 beer was added to the menu and this became a popular spot for the youth of Douglas County. Current ownership, Barbara Shelton, changed the name to Spur of the Moment and later built the current bar and grille in 2013.

Riggs Mercantile

James P. Riggs ("Uncle Jimmy") operated a mercantile in Larkspur from 1905 to 1933. The store structure is no longer standing.



Garcilaso House



Frank Garcilaso came to Larkspur in 1919 with his family from Michoacán, Mexico. Frank served in WWII and worked for the D&RG Railroad for forty five years. This home was once a box car purchased in 1945 for \$50.00.

Lounsberry House



Mrs. M. S. Lounsberry operated a general store around the turn of the century at this location. A Fire in July of 1900 almost destroyed the building but the Denver & Rio Grande water tank was emptied into an irrigation ditch and the town of Larkspur was saved from destruction.